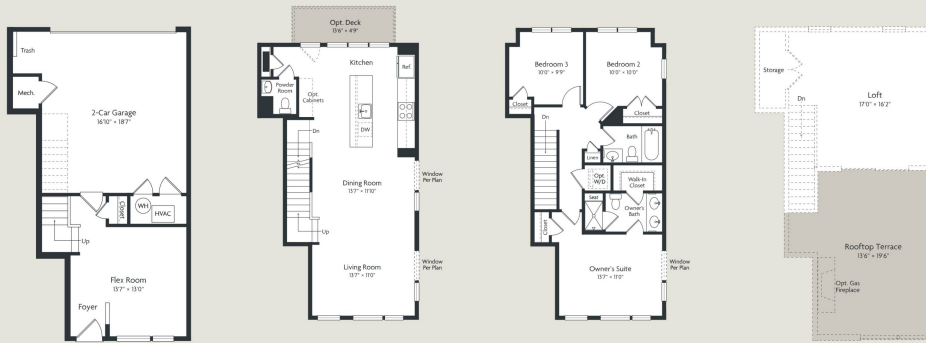


**GERSHWIN**



**ENTRY LEVEL**  
Standard

**MAIN LEVEL**  
Standard

**UPPER LEVEL**  
Standard

**OPTIONAL LOFT LEVEL**  
Optional Loft Level



Renderings and floorplans are for illustrative purposes only. Actual layout, room dimensions, window sizes and locations, and steps to grade vary per plan, and are subject to modifications without notice. See Sales Manager for further information. MHBK17457



Base Price

**\$599,900**

**3 Beds | 2 Baths | 1 Half Bath | 2 Garage**

## About This Plan

The Gershwin features 3 luxury levels with 3 bedrooms on the upper level, 2-car garage and optional loft level with rooftop terrace. All just steps from metro's red line.

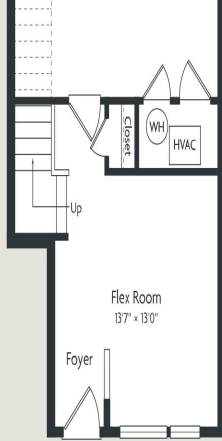
## About This Community

The Gershwin features 3 luxury levels with 3 bedrooms on the upper level, 2-car garage and optional loft level with rooftop terrace. All just steps from metro's red line.

## Floorplans

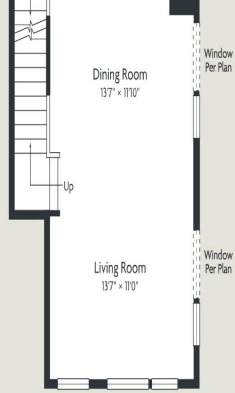
**GERSHWIN**





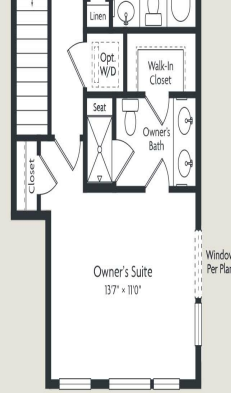
### ENTRY LEVEL

Standard



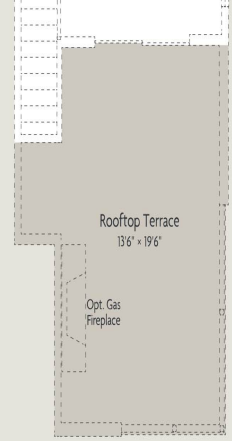
### MAIN LEVEL

Standard



### UPPER LEVEL

Standard



### OPTIONAL LOFT LEVEL

Optional Loft Level

Renderings and floorplans are for illustrative purposes only. Actual layout, room dimensions, window sizes and locations, and steps to grade vary per plan, and are subject to modifications without notice. See Sales Manager for further information. MHR #7487

