

COPELAND



ENTRY LEVEL
Bedroom 4 with Bath

MAIN LEVEL
Standard

UPPER LEVEL
Standard

LOFT LEVEL
Standard

Base Price

\$669,900

3 Beds | 3 Baths | 1 Half Bath | 2 Garage

About This Plan

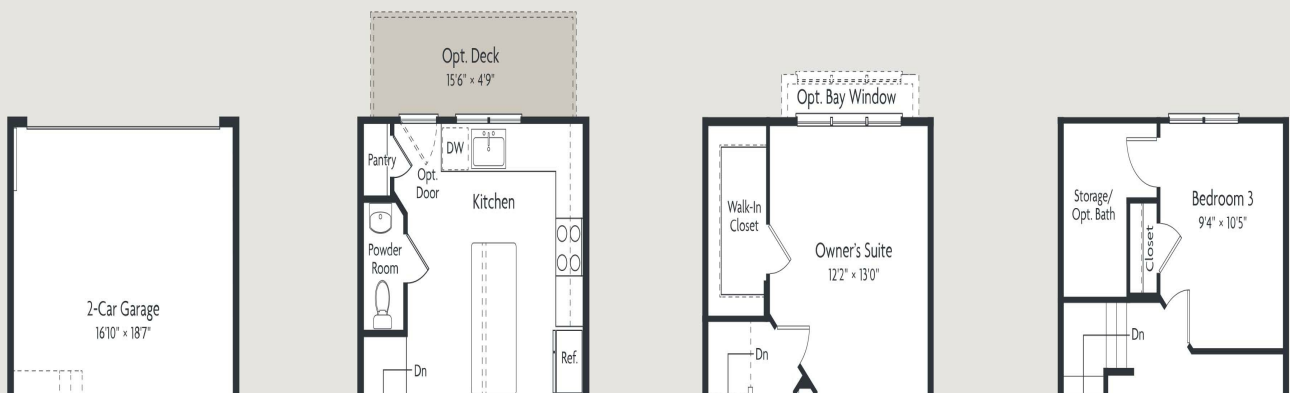
The Copeland features 3-4 bedrooms, 2.5-4.5 baths, loft, rooftop terrace and garage parking. The townhomes include Chef's kitchens with granite countertops and ENERGY STAR appliances and optional exposed brick walls and designer stair rails.

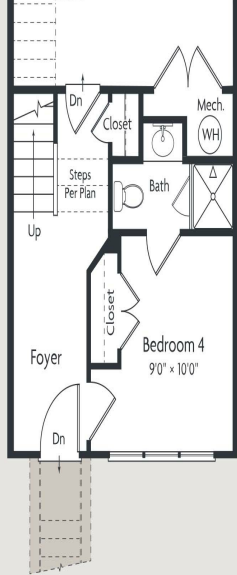
About This Community

The Copeland features 3-4 bedrooms, 2.5-4.5 baths, loft, rooftop terrace and garage parking. The townhomes include Chef's kitchens with granite countertops and ENERGY STAR appliances and optional exposed brick walls and designer stair rails.

Floorplans

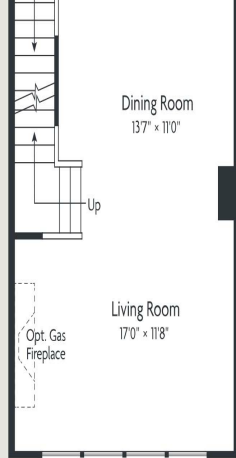
COPELAND





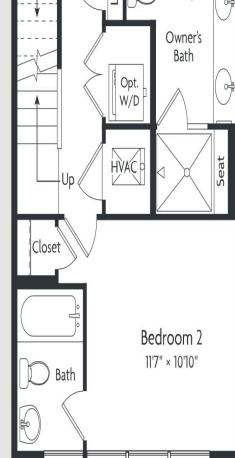
ENTRY LEVEL

Bedroom 4 with Bath



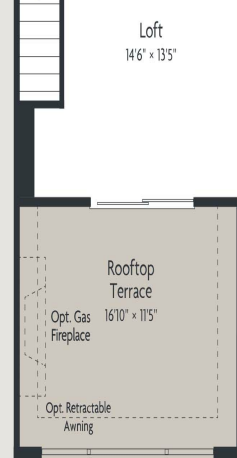
MAIN LEVEL

Standard



UPPER LEVEL

Standard



LOFT LEVEL

Standard

Renderings and floorplans are for illustrative purposes only. Actual layout, room dimensions, window sizes and locations, and steps to grade vary per plan, and are subject to modifications without notice. See Sales Manager for further information. MHBR #7487

