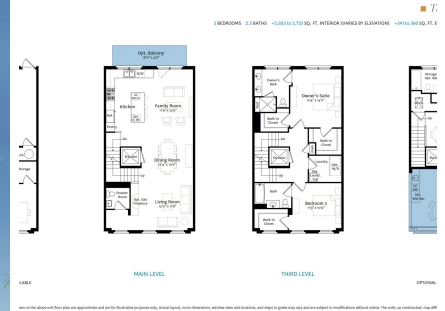


Powered by newhomesguide.com



Base Price

**\$2,145,000**

**3 Beds | 2 Baths | 1 Half Bath | 2 Garage**

## About This Plan

The Bryan features 3-4 bedrooms, garage parking, loft and rooftop terrace.

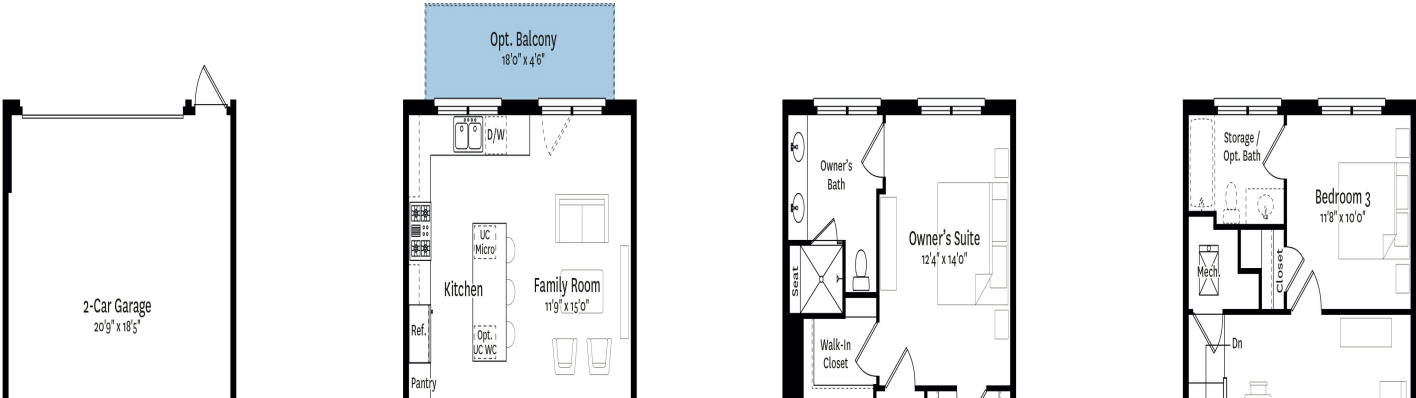
## About This Community

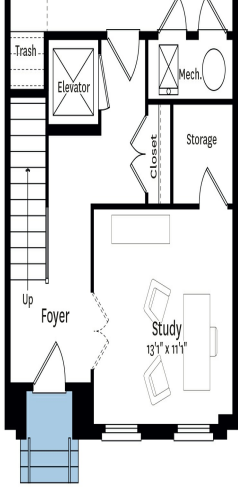
The Bryan features 3-4 bedrooms, garage parking, loft and rooftop terrace.

Floorplans

The BRYAN

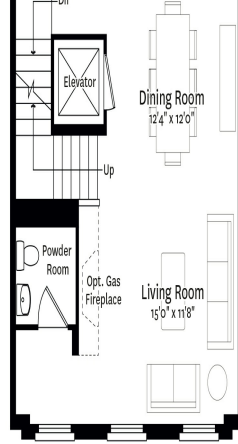
3 BEDROOMS 2.5 BATHS ~2,693 to 2,732 SQ. FT. INTERIOR (VARIES BY ELEVATION) ~341 to 366 SQ. FT. EXTERIOR (VARIES BY ELEVATION)



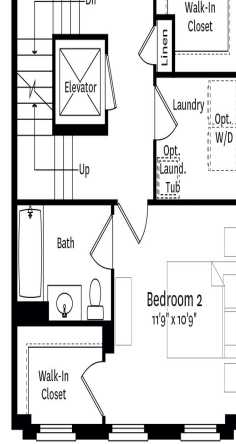


### ENTRY LEVEL

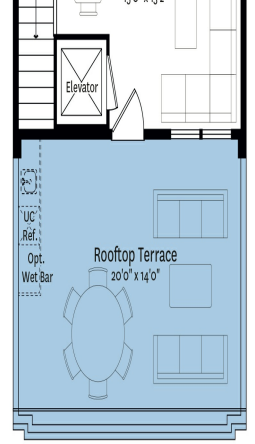
OPTIONAL 4 BEDROOM PLAN AVAILABLE



### MAIN LEVEL



### THIRD LEVEL



### LOFT LEVEL

OPTIONAL OPEN LOFT PLAN AVAILABLE

The specifications, dimensions and features shown on the above unit floor plan are approximate and are for illustrative purposes only. Actual layout, room dimensions, window sizes and locations, and steps to grade may vary and are subject to modifications without notice. The units, as constructed, may differ somewhat from the above floor plan.