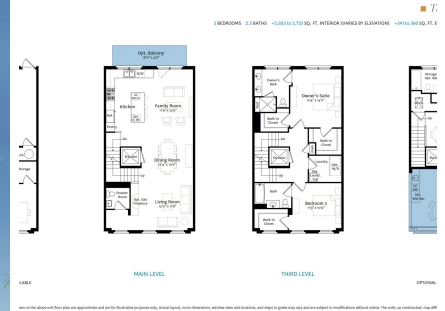


Powered by newhomesguide.com



Base Price

\$2,145,000

3 Beds | 2 Baths | 1 Half Bath | 2 Garage

About This Plan

The Bryan features 3-4 bedrooms, garage parking, loft and rooftop terrace.

About This Community

The Bryan features 3-4 bedrooms, garage parking, loft and rooftop terrace.

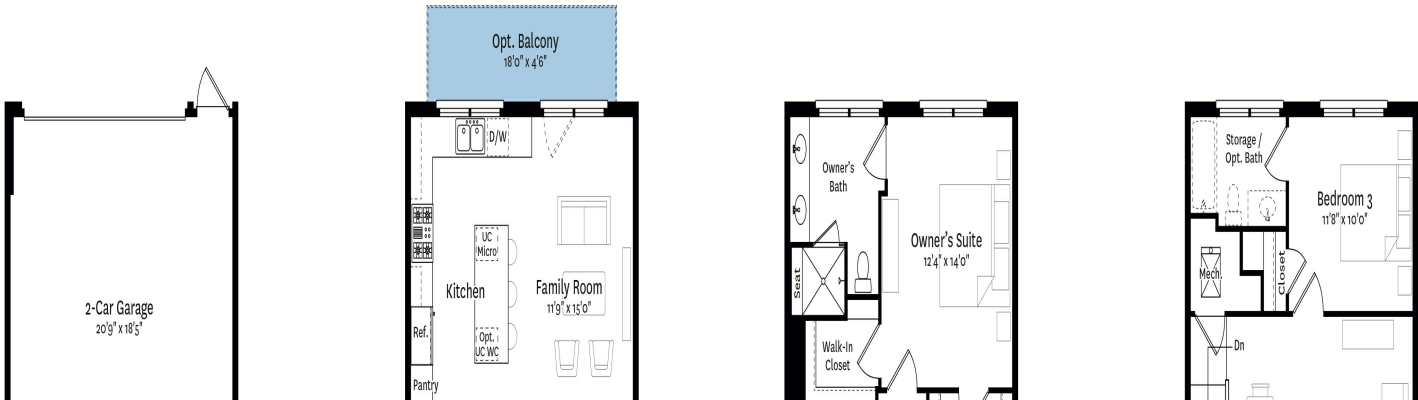
THE NEIGHBORHOODS OF

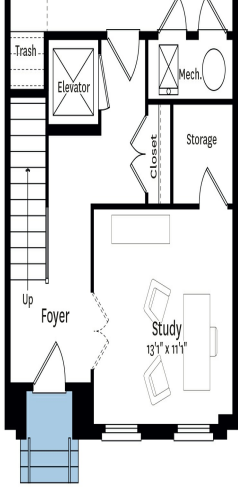


Floorplans

■ *The* BRYAN

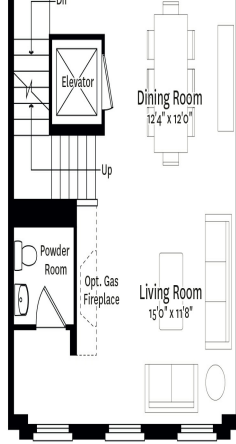
3 BEDROOMS 2.5 BATHS ~2,693 to 2,732 SQ. FT. INTERIOR (VARIES BY ELEVATION) ~341 to 366 SQ. FT. EXTERIOR (VARIES BY ELEVATION)



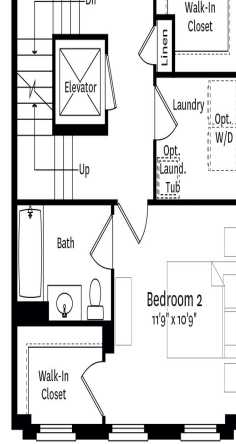


ENTRY LEVEL

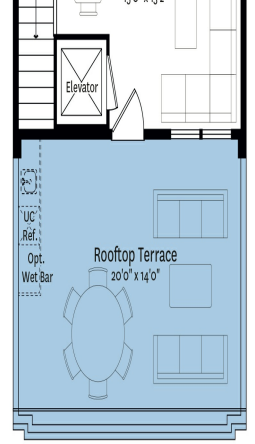
OPTIONAL 4 BEDROOM PLAN AVAILABLE



MAIN LEVEL



THIRD LEVEL



LOFT LEVEL

OPTIONAL OPEN LOFT PLAN AVAILABLE

The specifications, dimensions and features shown on the above unit floor plan are approximate and are for illustrative purposes only. Actual layout, room dimensions, window sizes and locations, and steps to grade may vary and are subject to modifications without notice. The units, as constructed, may differ somewhat from the above floor plan.