



Base Price

\$859,900

3 Beds | 2 Baths | 1 Half Bath | 2 Garage

About This Plan

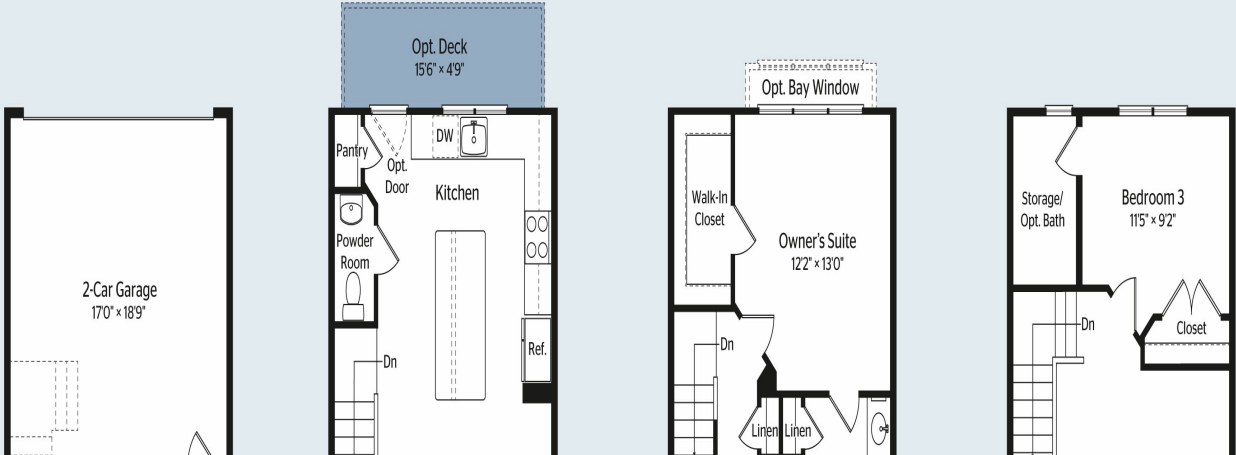
The Calvin model features contemporary architecture, open main living level, 2-car garage, study, three bedrooms, 2.5 bathrooms, loft and rooftop terrace.

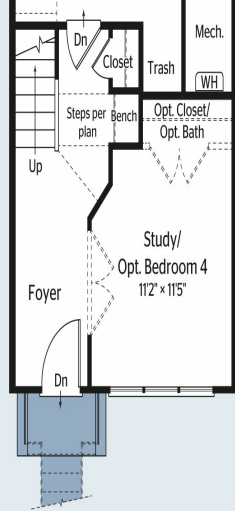
About This Community

The Calvin model features contemporary architecture, open main living level, 2-car garage, study, three bedrooms, 2.5 bathrooms, loft and rooftop terrace.

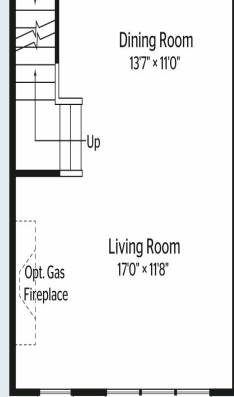
Floorplans

CALVIN



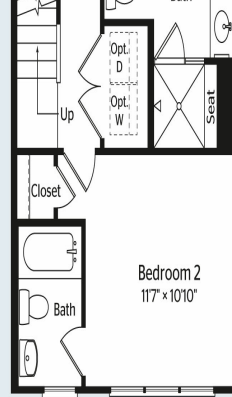


Entry level



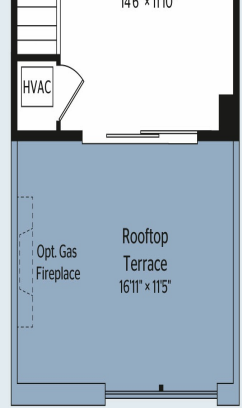
Main level

Optional Center Kitchen Available



Upper level

Optional Deluxe Owner's Bath Available



Loft level

Optional Open Loft Available
Optional Multi-Generational Suite Available



Renderings and floorplans are for illustrative purposes only. Actual layout, room dimensions, window sizes and locations, and steps to grade vary per plan, and are subject to modifications without notice. See Sales Manager for further information. MHB# 7472

