



Powered by newhomesguide.com



Base Price

\$504,990

3 Beds | 2 Baths | 2 Garage

About This Plan

The Hayward home plan is a 2223 square-foot single-family home at Somerset Hill in the desirable neighborhood of Bel Air, Maryland. This popular Hayward home design includes 3 bedrooms, 2 bathrooms, and a 2-car garage. You will love the stainless steel appliances, granite counter tops, and LED lighting in the kitchen. Other highlights include: optional 4th bedroom, optional second floor living space, optional screened porch, optional flex space, optional alternative owner's bathroom, and covered patio. This home is available SOON so stop by Somerset Hill today and see it for yourself!

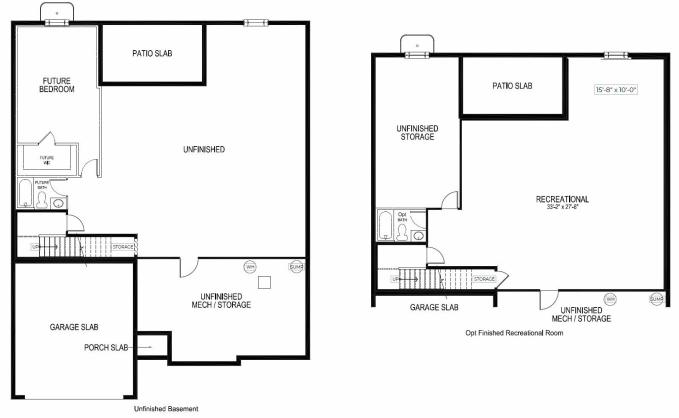
About This Community

The Hayward home plan is a 2223 square-foot single-family home at Somerset Hill in the desirable neighborhood of Bel Air, Maryland. This popular Hayward home design includes 3 bedrooms, 2 bathrooms, and a 2-car garage. You will love the stainless steel appliances, granite counter tops, and LED lighting in the kitchen. Other highlights include: optional 4th bedroom, optional second floor living space, optional screened porch, optional flex space, optional alternative owner's bathroom, and covered patio. This home is available SOON so stop by Somerset Hill today and see it for yourself!

Floorplans



FIRST FLOOR



Unfinished Basement

