



Base Price

**\$234,990**

**4 Beds | 2 Baths | 1 Half Bath | 1 Garage**

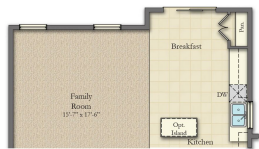
## About This Plan

Light and bright, this wonderful Newbury II has all the curb appeal you're looking for, with a multitude of windows.. The welcoming front porch protects you and your guests from the elements. The gracious foyer opens to formal living and dining rooms, offering a lovely place to entertain. The attached garage opens to a mud room where you can drop wet boots, coats and umbrellas on your way to the kitchen. The kitchen is the heart of this home, with an island, granite countertops and stainless steel Whirlpool appliances. Upstairs, you'll find 3 bedrooms for the family as well as your private owner's suite with dual walk-in-closets and a bath with dual vanities and a linen closet. The hall bath is also equipped with dual sinks. Don't miss out on this great Newbury III.

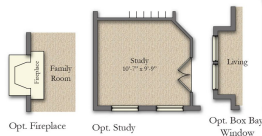
## About This Community

Light and bright, this wonderful Newbury II has all the curb appeal you're looking for, with a multitude of windows.. The welcoming front porch protects you and your guests from the elements. The gracious foyer opens to formal living and dining rooms, offering a lovely place to entertain. The attached garage opens to a mud room where you can drop wet boots, coats and umbrellas on your way to the kitchen. The kitchen is the heart of this home, with an island, granite countertops and stainless steel Whirlpool appliances. Upstairs, you'll find 3 bedrooms for the family as well as your private owner's suite with dual walk-in-closets and a bath with dual vanities and a linen closet. The hall bath is also equipped with dual sinks. Don't miss out on this great Newbury III.

## Floorplans



Opt. 4' Ext. To Rear



Opt. Fireplace

Opt. Study

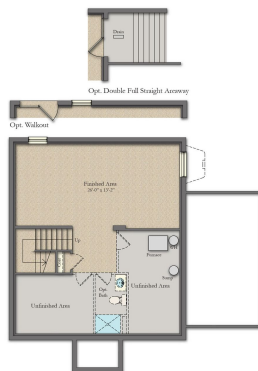
Opt. Box Bay Window



Opt. Gourmet Kitchen w/ 4' Ext. To Rear



Opt. Gourmet Kitchen



BASEMENT FLOOR