



Powered by [newhomesguide.com](https://www.newhomesguide.com)



Base Price

**\$331,990**

**3 Beds | 2 Baths | 1 Garage**

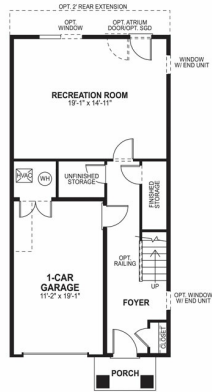
## About This Plan

Opening to the family room at the back and the great room at the front, the kitchen is the heart of this delightful townhome design. Chat with guests while cooking up a feast or take a quiet moment for yourself at the island breakfast bar. Add a fireplace to your family room for those chilly evenings, or extend your outdoor living space with a rear deck. Downstairs, your attached one car garage opens into the foyer while the rec room provides space for an office, craft room, man cave or teen retreat. Add a full bath or powder room and create the perfect guest suite. The top level offers a generous owner's suite with private bath, two additional bedrooms, a hall bath and laundry.

## About This Community

Opening to the family room at the back and the great room at the front, the kitchen is the heart of this delightful townhome design. Chat with guests while cooking up a feast or take a quiet moment for yourself at the island breakfast bar. Add a fireplace to your family room for those chilly evenings, or extend your outdoor living space with a rear deck. Downstairs, your attached one car garage opens into the foyer while the rec room provides space for an office, craft room, man cave or teen retreat. Add a full bath or powder room and create the perfect guest suite. The top level offers a generous owner's suite with private bath, two additional bedrooms, a hall bath and laundry.

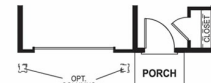
# Floorplans



**LOWER LEVEL  
ELEVATION 1**  
(COLUMNS PER ELEVATION)



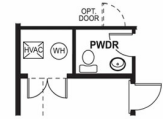
**OPTIONAL LOWER LEVEL  
FULL BATH**



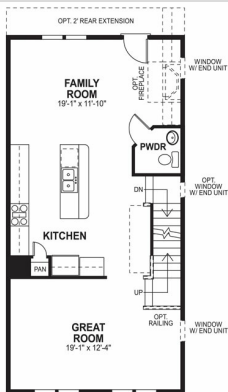
**OPTIONAL GARAGE PORCH  
ELEVATION 1, 3, 4**



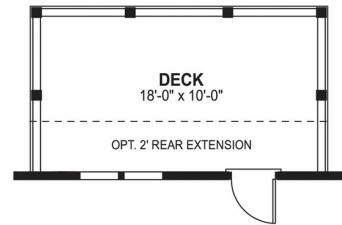
**OPTIONAL BEDROOM #4**



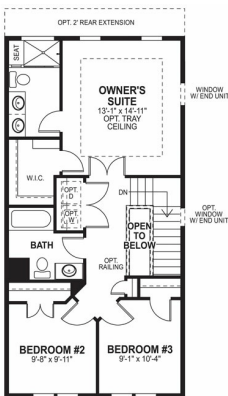
**OPTIONAL LOWER  
LEVEL POWDER ROOM**



**FIRST FLOOR  
ELEVATION 1**



**OPTIONAL DECK**



**SECOND FLOOR  
ELEVATION 1**