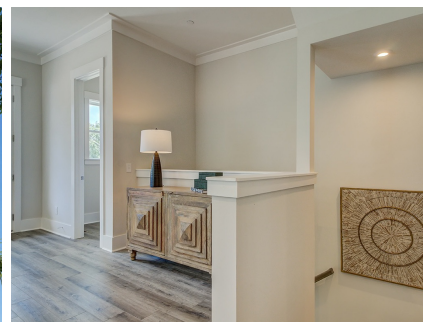


**1106 Studdingsail Lane**  
Charleston, SC 29412

**STANLEY MARTIN**

Powered by newhomesguide.com

Multi-Family



**\$750,000**

**3 Beds | 3 Baths | 1 Half Bath | 2 Garage | 2,236 Sq Ft**

## About This House

New Construction on Folly loaded with designer upgrades throughout the home with water views that cannot be beaten! Coastal waterfront living at its finest at a prime location, The Cove on Folly. Lowcountry island living welcomes you with elevated main living in a stunning spacious open floorplan. Airy 10-foot ceilings and 8' paneled doors meet with striking 8" plank flooring found throughout all main living areas. The gourmet kitchen, that is every chef's dream, offers 42' cabinets, stainless steel gas appliances including double ovens, gas cooktop, and vent hood, quartz countertops, tile backsplash and sprawling kitchen island. Seamlessly transition to your open dining space with its own front balcony. Toward the rear of the home, a spacious family room with spectacular views

## About This Community

New Construction on Folly loaded with designer upgrades throughout the home with water views that cannot be beaten! Coastal waterfront living at its finest at a prime location, The Cove on Folly. Lowcountry island living welcomes you with elevated main living in a stunning spacious open floorplan. Airy 10-foot ceilings and 8' paneled doors meet with striking 8" plank flooring found throughout all main living areas. The gourmet kitchen, that is every chef's dream, offers 42' cabinets, stainless steel gas appliances including double ovens, gas cooktop, and vent hood, quartz countertops, tile backsplash and sprawling kitchen island. Seamlessly transition to your open dining space with its own front balcony. Toward the rear of the home, a spacious family room with spectacular views