

1502 Crampton Street
Brunswick, MD 21716

KHovnanian
Homes

Powered by newhomesguide.com

Duplex



\$2,147,483,647

3 Beds | 3 Baths | 1 Half Bath | 2 Levels | 2 Garage | 2,900 Sq Ft

About This House

Striking gourmet kitchen with large island for meal prep. Spacious great room with slider to backyard. Luxurious owner's suite with triple windows. Relaxing owner's spa bath with dual sinks. Convenient end unit homesite for added privacy. Versatile end unit homesite for added privacy.

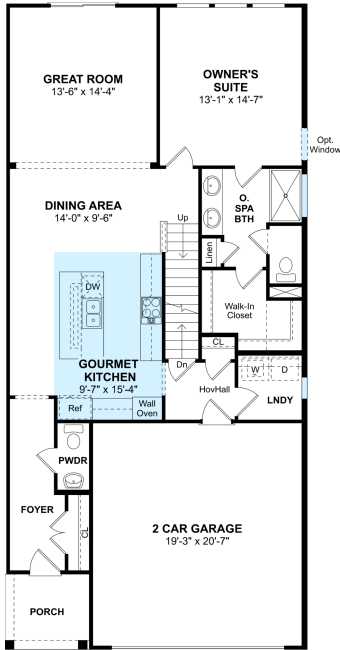
About This Community

Striking gourmet kitchen with large island for meal prep. Spacious great room with slider to backyard. Luxurious owner's suite with triple windows. Relaxing owner's spa bath with dual sinks. Convenient end unit homesite for added privacy. Versatile end unit homesite for added privacy.

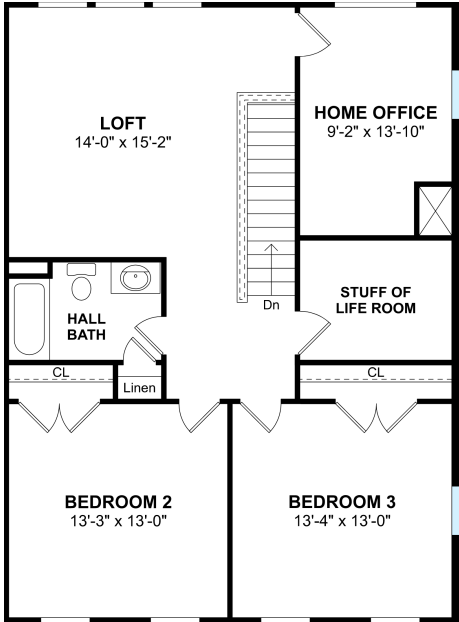
1502 Crampton Street
Brunswick, MD 21716



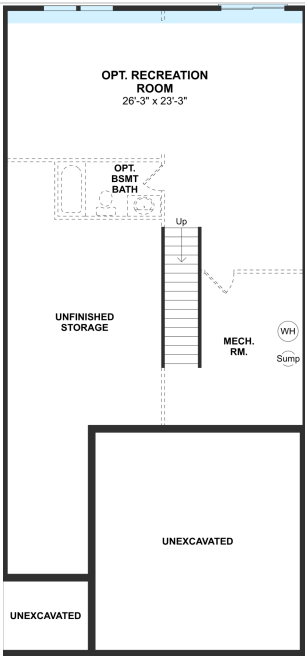
Floorplans



FIRST FLOOR



SECOND FLOOR



BASEMENT