

Base Price

\$680,000**2 Beds | 2 Baths | 1 Half Bath | 2 Garage**

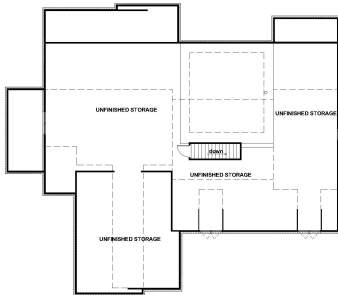
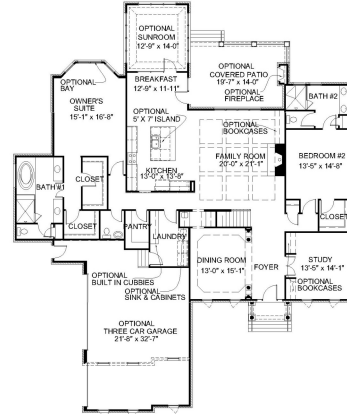
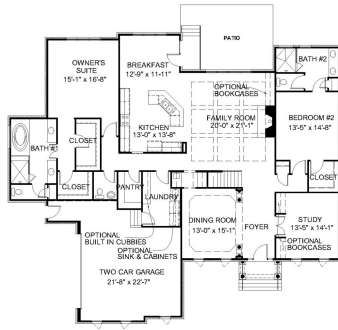
About This Plan

"We invite you to customize our plans to personalize your home" \u00a0 \u00a0 The Heatherworth features: First floor owners suite with 2 walk-in closets Additional first floor suite with full bathroom and walk-in closet Designer kitchen with gull island Spacious family room with vented fireplace, coffered ceiling, and optional built in bookcases Dining room with tray ceiling, columns, and heavy trim\u00a0 Formal living room which has the option to be converted to a study Two car garage with pedestrian door Aggregate patio Optional covered patio\u00a0 Optional sunroom with windows on 3 sides and vaulted ceiling Entire second floor is unfinished walk-up storage with option to finish as: Left Two bedrooms with walk-in closets Two full bathrooms Game room

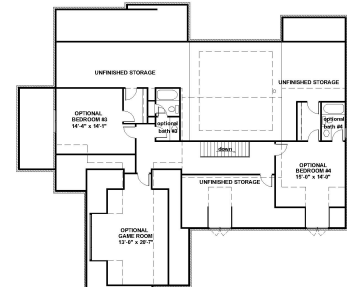
About This Community

"We invite you to customize our plans to personalize your home" \u00a0 \u00a0 The Heatherworth features: First floor owners suite with 2 walk-in closets Additional first floor suite with full bathroom and walk-in closet Designer kitchen with gull island Spacious family room with vented fireplace, coffered ceiling, and optional built in bookcases Dining room with tray ceiling, columns, and heavy trim\u00a0 Formal living room which has the option to be converted to a study Two car garage with pedestrian door Aggregate patio Optional covered patio\u00a0 Optional sunroom with windows on 3 sides and vaulted ceiling Entire second floor is unfinished walk-up storage with option to finish as: Left Two bedrooms with walk-in closets Two full bathrooms Game room

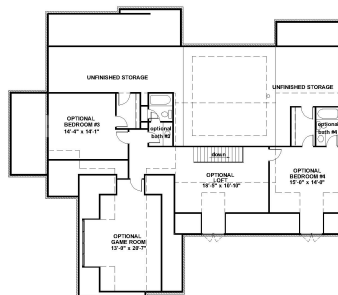
Floorplans



STANDARD SECOND FLOOR PLAN



OPTIONAL SECOND FLOOR PLAN



OPTIONAL SECOND FLOOR PLAN