



Powered by [newhomesguide.com](https://www.newhomesguide.com)



Base Price

\$324,990

3 Beds | 2 Baths | 1 Garage

About This Plan

Opening to the family room at the back and the great room at the front, the kitchen is the heart of this delightful townhome design. Chat with guests while cooking up a feast or take a quiet moment for yourself at the island breakfast bar. Add a fireplace to your family room for those chilly evenings, or extend your outdoor living space with a rear deck. Downstairs, your attached one car garage opens into the foyer while the rec room provides space for an office, craft room, man cave or teen retreat. Add a full bath or powder room and create the perfect guest suite. The top level offers a generous owner's suite with private bath, two additional bedrooms, a hall bath and laundry.

About This Community

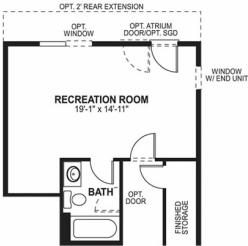
Opening to the family room at the back and the great room at the front, the kitchen is the heart of this delightful townhome design. Chat with guests while cooking up a feast or take a quiet moment for yourself at the island breakfast bar. Add a fireplace to your family room for those chilly evenings, or extend your outdoor living space with a rear deck. Downstairs, your attached one car garage opens into the foyer while the rec room provides space for an office, craft room, man cave or teen retreat. Add a full bath or powder room and create the perfect guest suite. The top level offers a generous owner's suite with private bath, two additional bedrooms, a hall bath and laundry.



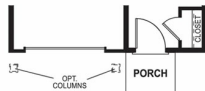
Floorplans



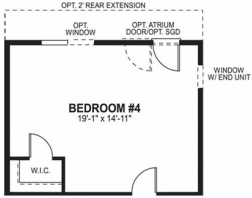
LOWER LEVEL
ELEVATION 1
(COLUMNS PER ELEVATION)



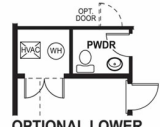
OPTIONAL LOWER LEVEL
FULL BATH



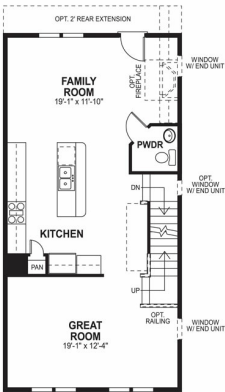
OPTIONAL GARAGE PORCH
ELEVATION 1, 3, 4



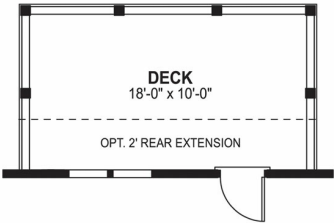
OPTIONAL BEDROOM #4



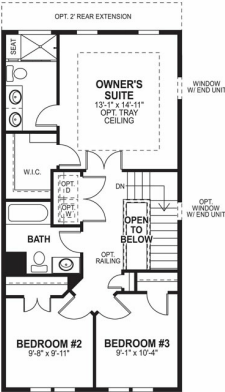
OPTIONAL LOWER
LEVEL POWDER ROOM



FIRST FLOOR
ELEVATION 1



OPTIONAL DECK



SECOND FLOOR
ELEVATION 1