



Base Price

\$560,000

3 Beds | 2 Baths | 1 Half Bath | 2 Garage

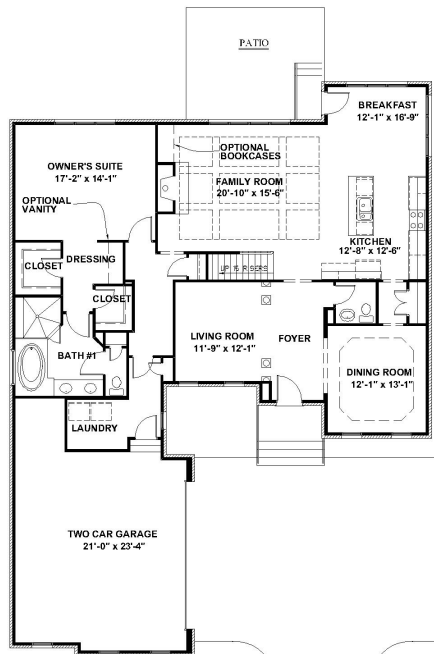
About This Plan

Explore our Hampworth model home using 3D technology! "We invite you to customize our plans to personalize your home" \u00a0 \u00a0 The Hampworth features: Elegant 2 story open foyer Columned entrance to living room Formal dining room with tray ceiling, crown moulding, & wainscot moulding detail Designer Kitchen First floor\owner's suite\with\walk in closets Additional 2 or 3 bedrooms plus loft upstairs Expansive family room with optional 2 story feature Breakfast room surrounded by glass Optional first floor study Optional sunroom Gas log fireplace Soaker\tub in\owner's bathroom 2.5 baths with an optional 3rd bathroom 2 car garage Aggregate patio

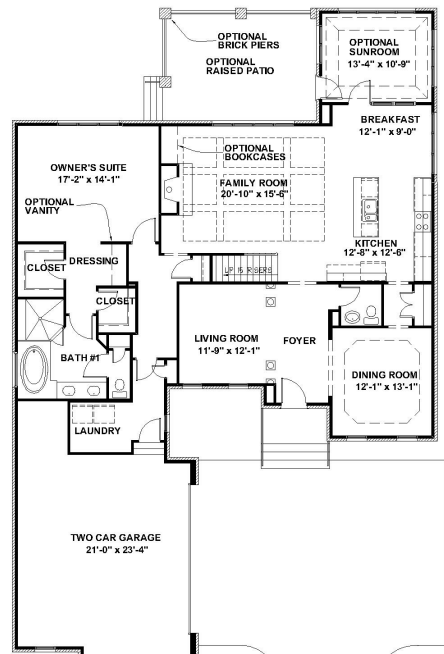
About This Community

Explore our Hampworth model home using 3D technology! "We invite you to customize our plans to personalize your home" \u00a0 \u00a0 The Hampworth features: Elegant 2 story open foyer Columned entrance to living room Formal dining room with tray ceiling, crown moulding, & wainscot moulding detail Designer Kitchen First floor\owner's suite\with\walk in closets Additional 2 or 3 bedrooms plus loft upstairs Expansive family room with optional 2 story feature Breakfast room surrounded by glass Optional first floor study Optional sunroom Gas log fireplace Soaker\tub in\owner's bathroom 2.5 baths with an optional 3rd bathroom 2 car garage Aggregate patio

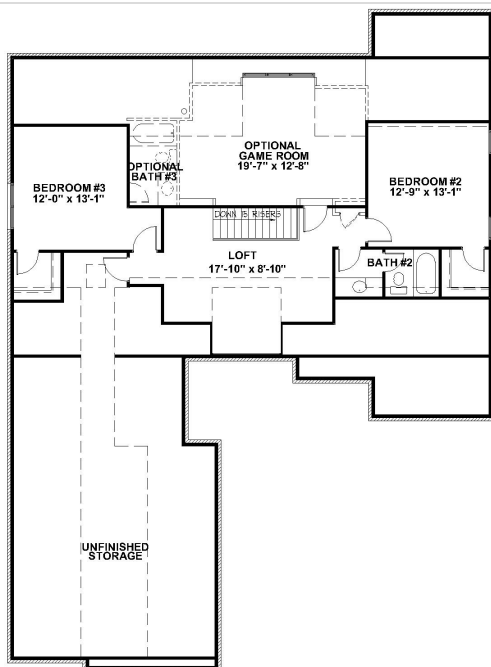
Floorplans



STANDARD FIRST FLOOR PLAN



OPTIONAL FIRST FLOOR PLAN



STANDARD SECOND FLOOR PLAN