

18602 Compher Court
Poolesville, MD 20837

**KETTLER
FORLINES**
HOMES

Powered by [newhomesguide.com](https://www.newhomesguide.com)



\$999,900

5 Beds | 6 Baths | 3 Garage | 5,950 Sq Ft

About This House

The Montgomery is a modern home design that presents a traditional, yet open floor plan. Visual sight lines carry throughout this home, accented by natural light from ample windows. The huge quartz Kitchen island was carefully planned to utilize the space efficiently, but with contemporary style. The large, walk-in Kitchen pantry provides bonus storage space, while the adjacent beverage station is perfect for home entertaining. The first-floor layout also includes a large Dining Room with bay window and a Library with elegant French doors. Adding to the grandeur of the first floor is a Loggia/porch and a magnificent Sunroom. Even the stairway, which is a full foot wider than standard, reflects the large scale view and thoughtful design of the Montgomery. Upstairs, the Owners' Suite

About This Community

The Montgomery is a modern home design that presents a traditional, yet open floor plan. Visual sight lines carry throughout this home, accented by natural light from ample windows. The huge quartz Kitchen island was carefully planned to utilize the space efficiently, but with contemporary style. The large, walk-in Kitchen pantry provides bonus storage space, while the adjacent beverage station is perfect for home entertaining. The first-floor layout also includes a large Dining Room with bay window and a Library with elegant French doors. Adding to the grandeur of the first floor is a Loggia/porch and a magnificent Sunroom. Even the stairway, which is a full foot wider than standard, reflects the large scale view and thoughtful design of the Montgomery. Upstairs, the Owners' Suite

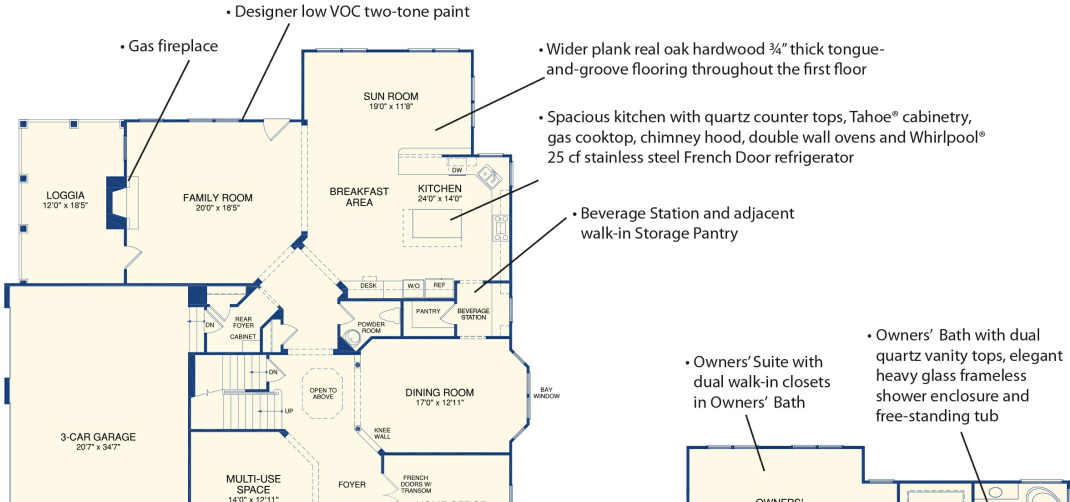
18602 Compher Court
Poolesville, MD 20837



Floorplans

THE MONTGOMERY

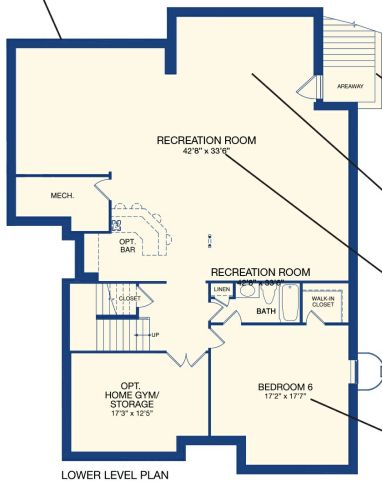
18602 Compher Court, Poolesville, MD 20837 • LOT 52-F





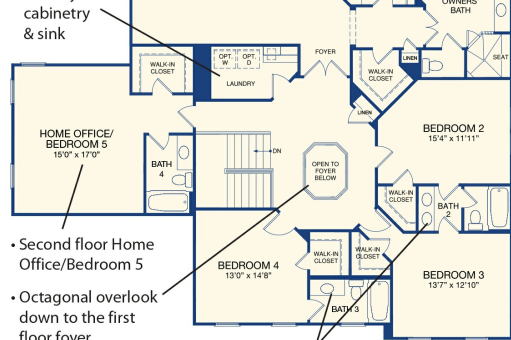
- Flexible Multi-Use Space
- 3-Car side-load Garage
- 3/4 porch with metal roof and stone watertable

- 10-year RWC Warranty



LOWER LEVEL PLAN

- Areaway
- Game Room
- Huge Finished Lower Level Rec Room
- Lower Level Bedroom with walk-in closet



SECOND FLOOR PLAN

- Second floor Home Office/Bedroom 5
- Octagonal overlook down to the first floor foyer
- Quartz vanity tops in all secondary Bathrooms

Plus:

- Smart Home PLUS, Including
 - Wifi enabled* Honeywell® programmable thermostats
 - Wifi enabled* Liftmaster® garage door openers with remote for each garage door
 - Wifi-enabled HD Video Doorbell Camera
 - Wifi-enabled Schlage® front door lock
 - USB Charging Ports with Electrical Outlets
 - Structured Data Stream Wiring Package including High-Speed/Video Connectivity