



DREAM FINDERS HOMES

Powered by newhomesguide.com



Powell A - Capital
Shown with *Optional Dormers*

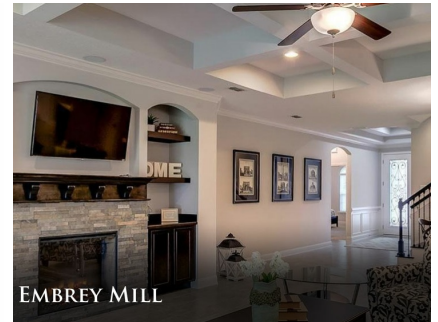


DREAM FINDERS
THE MAKER OF A QUALITY HOME

Base Price

\$474,990

4 Beds | 2 Baths | 1 Half Bath



About This Community



DREAM FINDERS HOMES

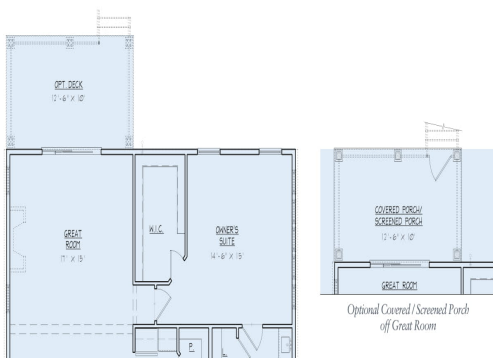
Floorplans

THE *Powell*

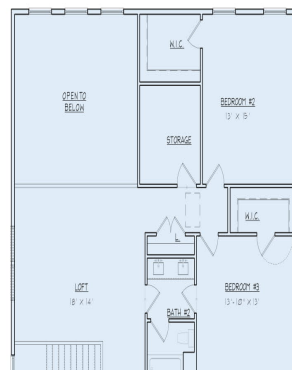
THE *Powell*

4 BEDROOM | 3.5 BATH | 2 CAR GARAGE • APPROX. 3,318 SQ. FT. LIVING AREA | 40'-0" WIDE X 61'-0" DEEP

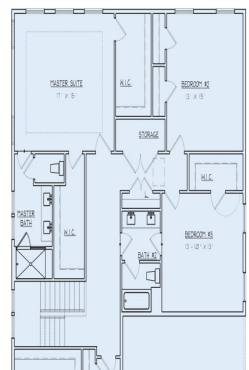
FIRST FLOOR & OPTIONAL ADDITIONS

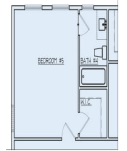
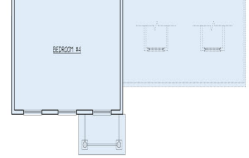
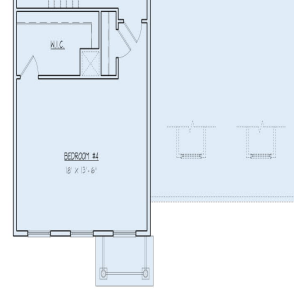
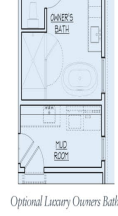
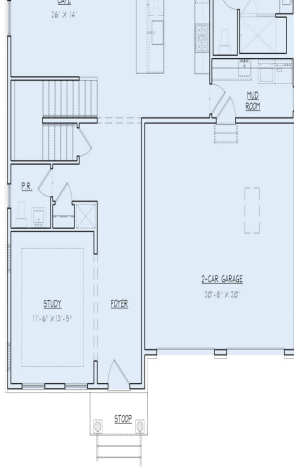


STANDARD SECOND FLOOR

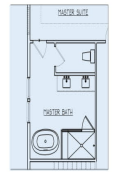


OPTIONAL SECOND FLOOR w/ 2ND MASTER SUITE

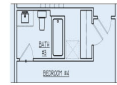




Optional Bedroom #5



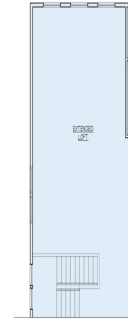
Optional Second Floor Master
Luxury Owners Bath



Optional Bath at Bedroom #4



Optional Bath at Bedroom #2



Optional Extended Loft



www.DREAMFINDERSHOMES.COM

DREAM FINDERS HOMES

For a full list of elevations please visit DreamFindersHomes.com. Elevations may be limited by community requirements. Plans are artist's renderings only. Dream Finders Homes reserves the right to make changes to these plans, specifications, and dimensions without prior notice. Copyright© 2018 Dream Finders Homes. 02/18