



Powered by [newhomesguide.com](https://newhomesguide.com)



5 BEDS



2ND FLOOR



LOWER LEVEL

Base Price

**\$1,599,000**

**5 Beds | 4 Baths | 1 Half Bath | 3 Levels | 2 Garage**

# About This Community



# Floorplans

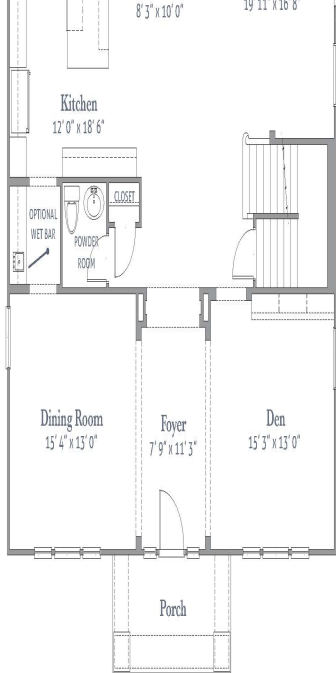


## THE ABINGDON

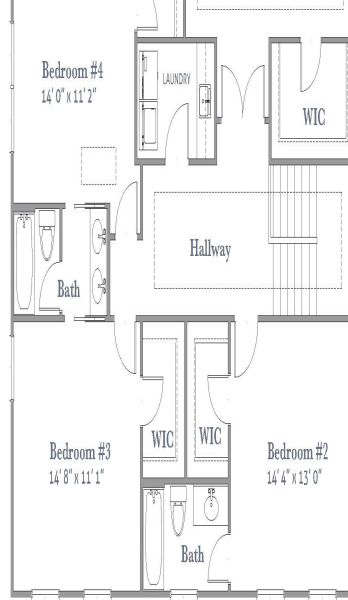
5 BEDROOM | 4.5 BATH | DEN | OFFICE | MEDIA & REC. RM

TWO-CAR GARAGE | 4,627 SQUARE FEET

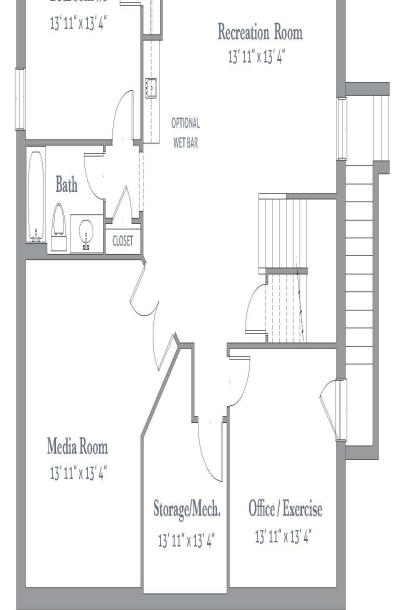




1ST FLOOR



2ND FLOOR



LOWER LEVEL