



Powered by newhomesguide.com



Base Price

\$1,619,000

5 Beds | 4 Baths | 1 Half Bath | 3 Levels | 2 Garage

About This Community

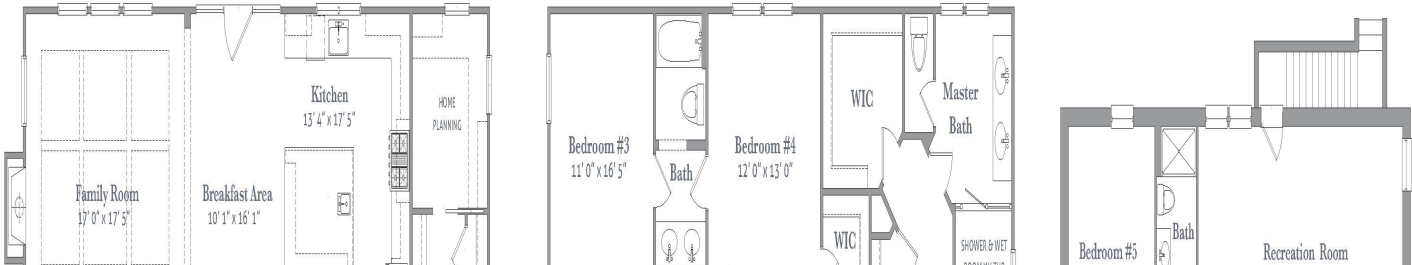


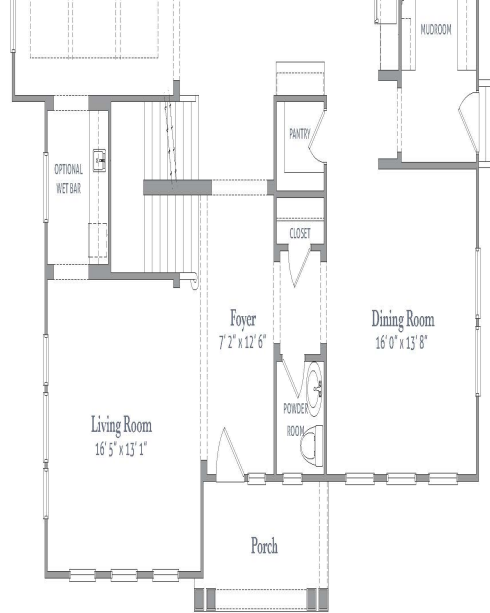
Floorplans

THE CLARENDON

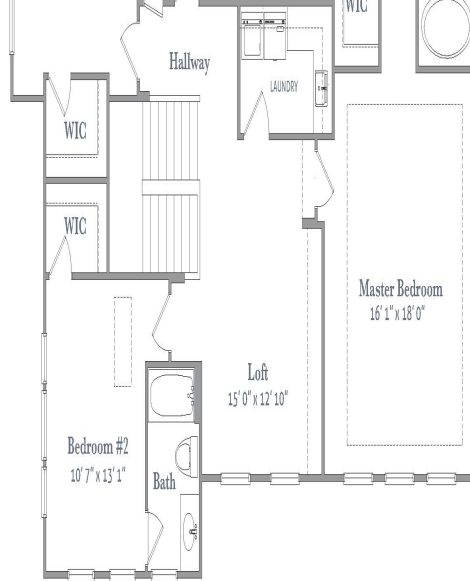
5 BEDROOM | 4.5 BATH | LOFT | GAME & REC. RM

TWO-CAR DETACHED GARAGE | 4,854 SQUARE FEET

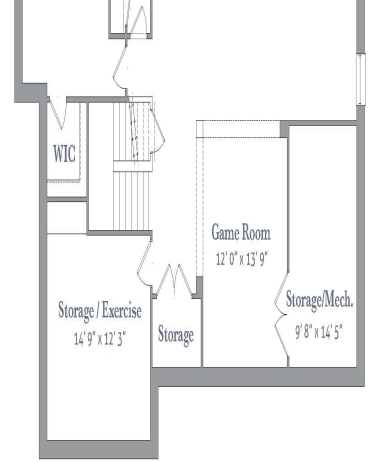




1ST FLOOR



2ND FLOOR



LOWER LEVEL