

30 N MARSHVIEW TER
MAGNOLIA, DE 19962



Powered by [newhomesguide.com](https://www.newhomesguide.com)

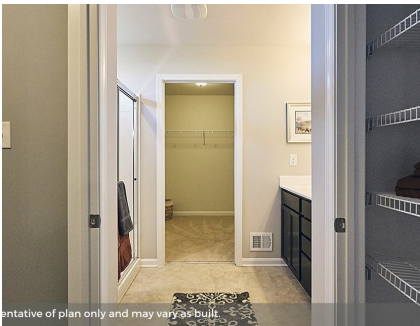
Single-Family



Representative of plan only and may vary as built.



Representative of plan only and may vary as built.



Representative of plan only and may vary as built.

\$319,455

4 Beds | 2 Baths | 1 Half Bath | 2 Levels | 2 Garage | 2,867 Sq Ft

About This House

Starting at 2,867 square feet this incredible floor plan offers 9' ceilings. The owner's suite features a connected full bathroom and walk-in closet, with plenty of space to create your own personal oasis. In addition, you'll find three spacious bedrooms with large closets that share a full bathroom, and an additional loft area all located on the second floor. Stainless kitchen package, unfinished basement, Granite kitchen counter tops. Realtors Warmly Welcome.

About This Community

Starting at 2,867 square feet this incredible floor plan offers 9' ceilings. The owner's suite features a connected full bathroom and walk-in closet, with plenty of space to create your own personal oasis. In addition, you'll find three spacious bedrooms with large closets that share a full bathroom, and an additional loft area all located on the second floor. Stainless kitchen package, unfinished basement, Granite kitchen counter tops. Realtors Warmly Welcome.

D·R·HORTON®
America's Builder

The floor plan for the second floor includes the following rooms and features:

- BEDROOM 5:** 11'-7" x 11'-11"
- BEDROOM 2:** 11'-11" x 11'-5"
- OWNER'S SUITE:** 18'-5" x 17'-5"
- BEDROOM 4:** 12'-11" x 12'-6"
- BEDROOM 3:** 12'-11" x 12'-9"
- BEDROOM 2:** 11'-8" x 17'-3"
- BATH 2:** 5'-0" x 7'-6"
- BATH 1:** 5'-0" x 7'-6"
- WIC (Walk-In Closet):** Multiple locations throughout the floor.
- MECH CLOSET:** Located near the center of the floor.
- Opt Bedroom 5:** An optional configuration for Bedroom 5.
- Opt Owner's Bath Tub/Shower Combo:** An optional configuration for Bath 1.
- Opt Bath 2 Double Sink:** An optional configuration for Bath 2.

