

50 Sedmont Circle
SMYRNA, DE 19977



Powered by newhomesguide.com

Townhome



Representative of plan only and may vary as built.



Representative of plan only and may vary as built.



Representative of plan only and may vary as built.

\$265,090

3 Beds | 2 Baths | 1 Level | 2 Garage | 1,776 Sq Ft

About This House

The Ameila is a contemporary, open concept floorplan with a well-appointed kitchen featuring granite countertops, and large island perfect for bar-style eating and entertaining. A large master suite situated at the back of the home for privacy, included a walk-in closet and double vanity. Towards the front of the home, two bedrooms share a full bathroom. Enjoy outdoor living space with a covered patio off of the living room. Pictures, photographs, colors, features, and sizes are for illustration purposes only and will vary from the homes as built. Home and community information, including pricing, included features, terms, availability, and amenities are subject to change prior to sale at any time without notice or obligation.

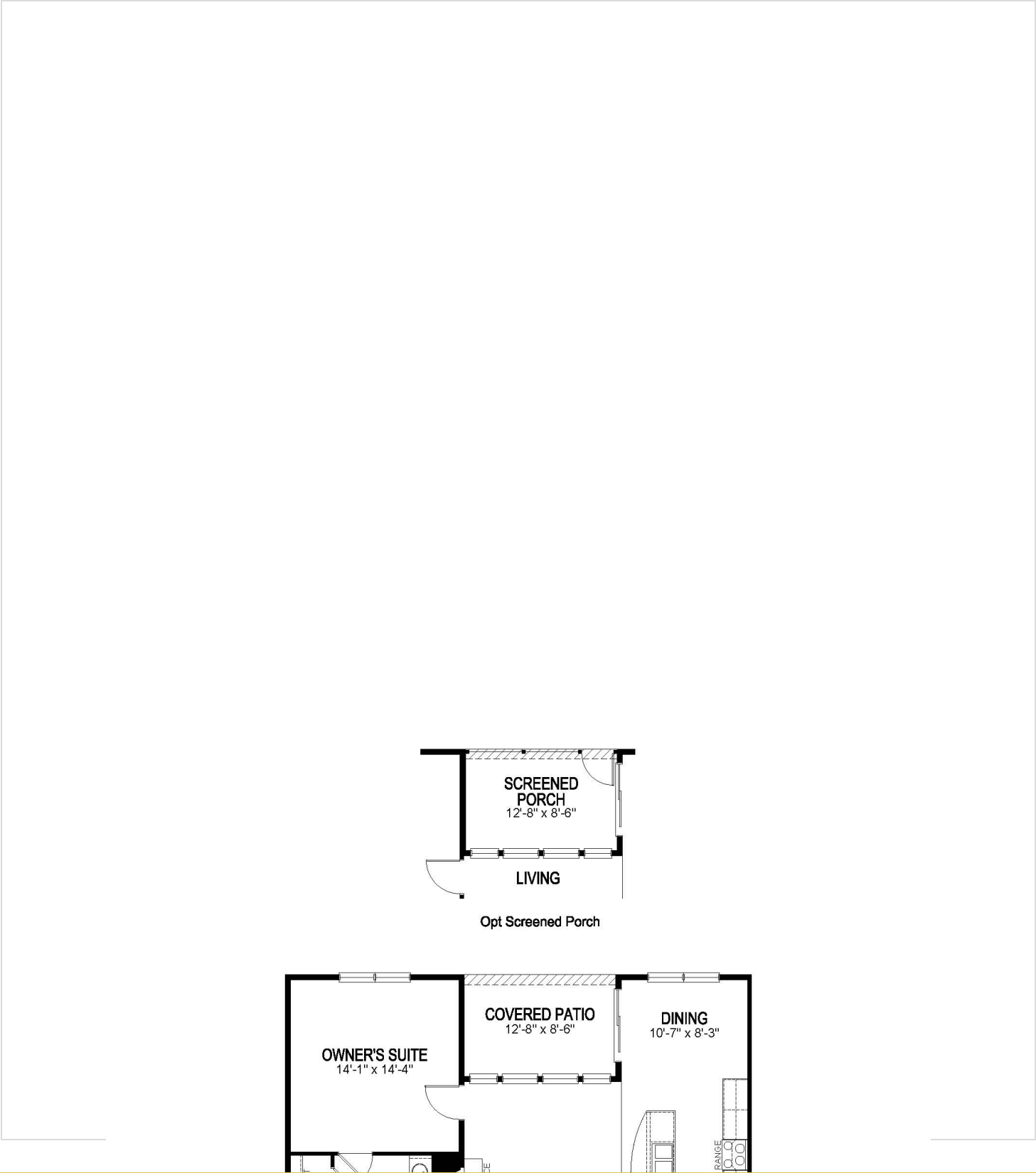
About This Community

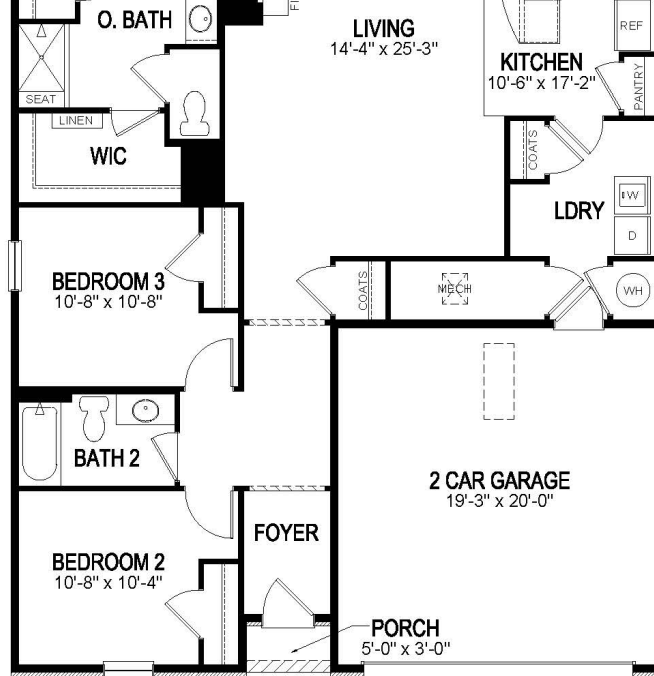
The Ameila is a contemporary, open concept floorplan with a well-appointed kitchen featuring granite countertops, and large island perfect for bar-style eating and entertaining. A large master suite situated at the back of the home for privacy, included a walk-in closet and double vanity. Towards the front of the home, two bedrooms share a full bathroom. Enjoy outdoor living space with a covered patio off of the living room. Pictures, photographs, colors, features, and sizes are for illustration purposes only and will vary from the homes as built. Home and community information, including pricing, included features, terms, availability, and amenities are subject to change prior to sale at any time without notice or obligation.

50 Sedmont Circle
SMYRNA, DE 19977



Floorplans





FIRST FLOOR