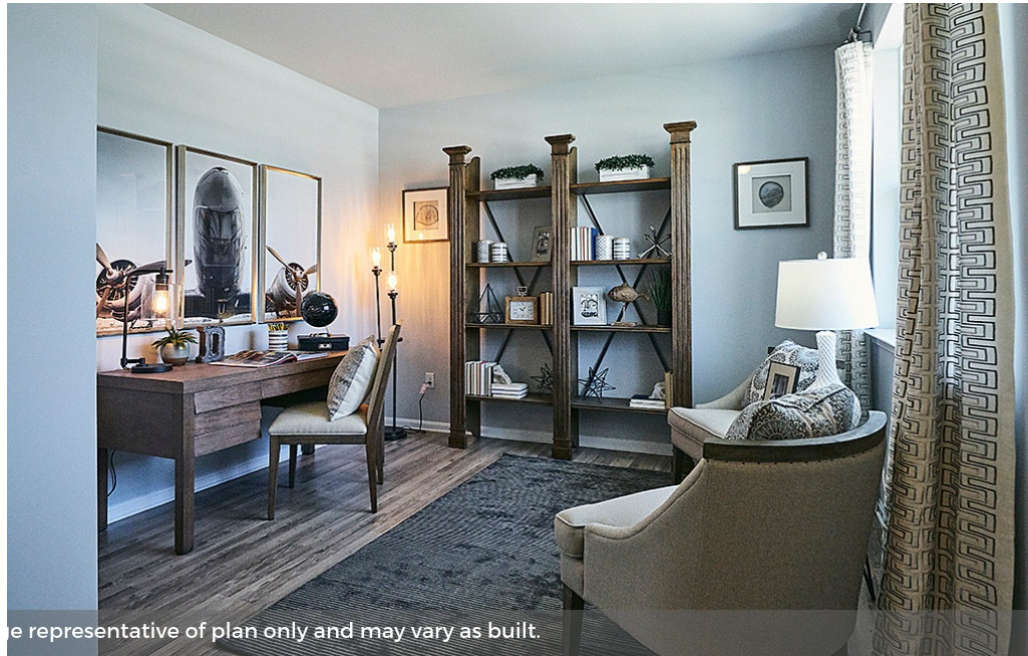


56 Tyndall Trail CAMDEN WYOMING, DE 19934



Powered by [newhomesguide.com](https://www.newhomesguide.com)

Single-Family



\$258,900

3 Beds | 2 Baths | 1 Half Bath | 2 Levels | 2 Garage | 2,169 Sq Ft

About This House

The Eastover is a highly popular floor plan within the Tidbury Crossing community. Well thought out, this layout consists of three bedrooms and two full bathrooms on the second level, as well as, a spacious loft area and a large laundry room. The main level features an open, eat-in kitchen with a walk-in pantry, family room, and powder room. The front flex room is an inviting space to welcome your guests or relax with a good book! For larger families you are able to replace the loft with a fourth bedroom! Contact a D.R. Horton sales representative to learn more about this amazing floor plan!

About This Community

The Eastover is a highly popular floor plan within the Tidbury Crossing community. Well thought out, this layout consists of three bedrooms and two full bathrooms on the second level, as well as, a spacious loft area and a large laundry room. The main level features an open, eat-in kitchen with a walk-in pantry, family room, and powder room. The front flex room is an inviting space to welcome your guests or relax with a good book! For larger families you are able to replace the loft with a fourth bedroom! Contact a D.R. Horton sales representative to learn more about this amazing floor plan!

D·R·HORTON®
America's Builder

