



Powered by [newhomesguide.com](https://www.newhomesguide.com)



Base Price

\$409,990

3 Beds | 2 Baths | 1 Half Bath | 1 Level | 2 Garage

About This Plan

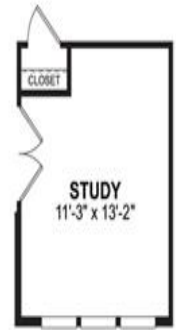
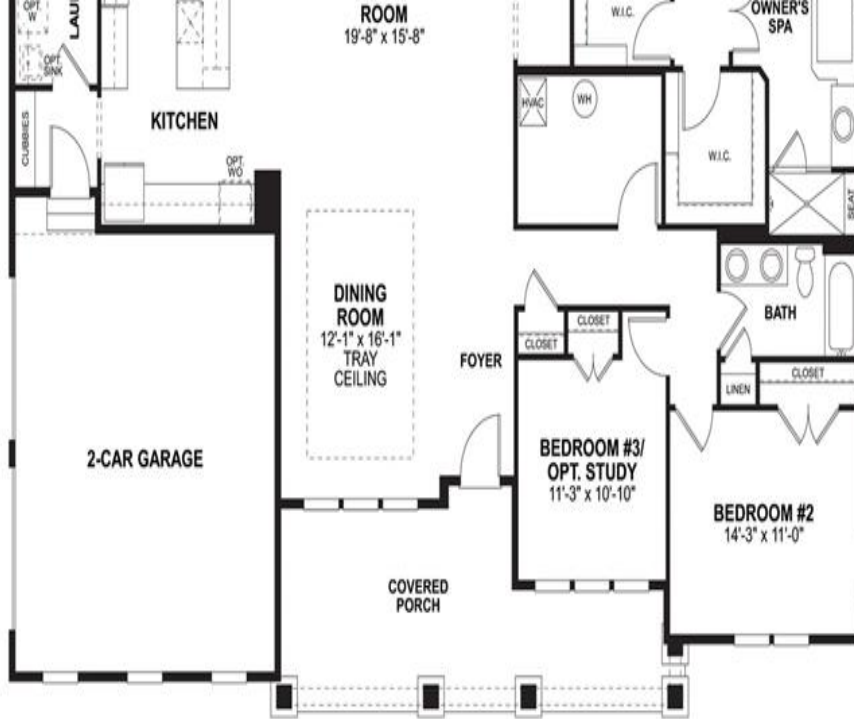
Space, space and more space, that's what you'll find in the Charlotte. The front door opens from the covered porch to a lovely foyer flanked by a formal dining room. As you move to the back of your home, you enter the great room with its cozy fireplace. The kitchen, with center island, double wall oven and walk in pantry is the perfect spot to cook up a feast for friends and family. Have breakfast or a quick lunch in the morning room. Located at the rear of your home is the spacious master suite with its elegant spa bath, two walk-in closets and light filled sitting room. You'll find two additional bedrooms and a hall bath at the front or opt for a study in lieu of one of the bedrooms. The covered rear deck will be the perfect place for an afternoon enjoying a cocktail with a fabulous wooded view. If you

About This Community

Space, space and more space, that's what you'll find in the Charlotte. The front door opens from the covered porch to a lovely foyer flanked by a formal dining room. As you move to the back of your home, you enter the great room with its cozy fireplace. The kitchen, with center island, double wall oven and walk in pantry is the perfect spot to cook up a feast for friends and family. Have breakfast or a quick lunch in the morning room. Located at the rear of your home is the spacious master suite with its elegant spa bath, two walk-in closets and light filled sitting room. You'll find two additional bedrooms and a hall bath at the front or opt for a study in lieu of one of the bedrooms. The covered rear deck will be the perfect place for an afternoon enjoying a cocktail with a fabulous wooded view. If you

Floorplans





OPTIONAL STUDY