

**422 Creekbed Cir**  
**SALISBURY, MD 21804**



Powered by [newhomesguide.com](https://newhomesguide.com)

Single-Family



**\$176,990**

**3 Beds | 2 Baths | 2 Levels | 1,356 Sq Ft**

## About This House

The best-selling Jefferson townhome design features 3 bedrooms and 2 bathrooms upstairs. Room allowed for a powder room downstairs! You will love this open concept floorplan featuring an over-sized peninsula in the kitchen, 9' ceilings on the main level and stainless steel appliances. These move in ready homes include full lawn care and irrigation, ceiling fan rough ins in master and living room , two parking spaces outside your door, LED lighting and a walk in closet in the owner's suite. Visit us today to see how you can make this home yours!

## About This Community

The best-selling Jefferson townhome design features 3 bedrooms and 2 bathrooms upstairs. Room allowed for a powder room downstairs! You will love this open concept floorplan featuring an over-sized peninsula in the kitchen, 9' ceilings on the main level and stainless steel appliances. These move in ready homes include full lawn care and irrigation, ceiling fan rough ins in master and living room , two parking spaces outside your door, LED lighting and a walk in closet in the owner's suite. Visit us today to see how you can make this home yours!

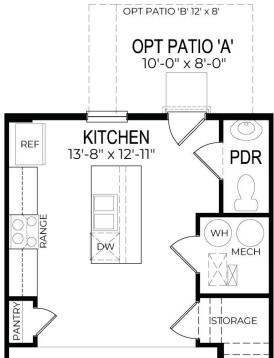
422 Creekbed Cir  
SALISBURY, MD 21804



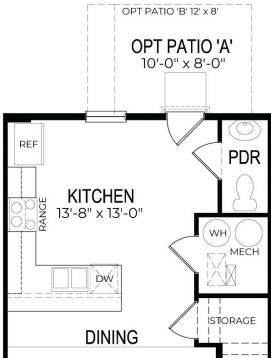
Floorplans



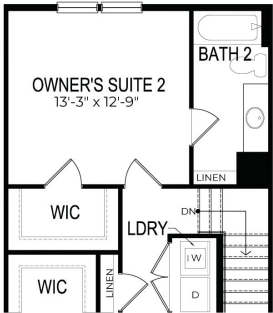
THE JEFFERSON | OPTIONS



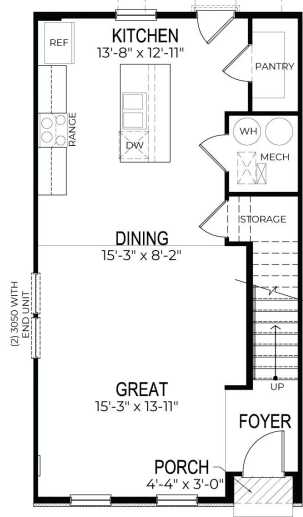
Opt Powder



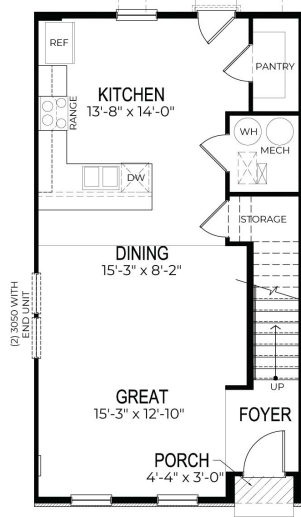
Alt Opt Powder



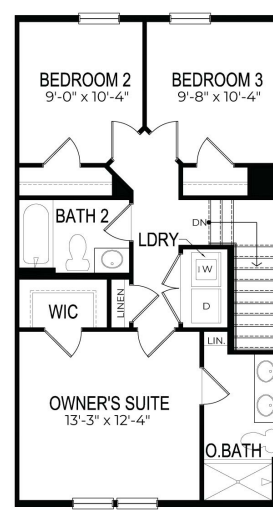
Opt Owner's Suite 2 w/ Walk-In-Closet



FIRST FLOOR



ALT FIRST FLOOR



SECOND FLOOR

## Two story with 3 Bedroom / 2 Bath

D.R. Horton is an equal housing opportunity builder.

DT01-20/36-1356 - REV. 11022018

**D.R. HORTON**  
America's Builder

D.R. HORTON • EXPRESS • EMERALD • FREEDOM

© Copyright 2018 D.R. Horton, Inc.