

20431 Beachfield Lane
MILFORD, DE 19963

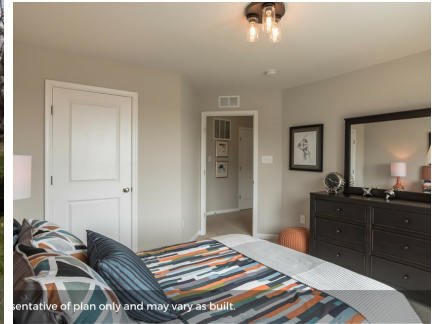


Powered by newhomesguide.com

Single-Family



representative of plan only and may vary as built.



representative of plan only and may vary as built.

\$292,455

4 Beds | 2 Baths | 1 Half Bath | 2 Levels | 2 Garage | 2,867 Sq Ft

About This House

The Northwest is perfect for the chef & the family. This floorplan showcases peninsula and an island with room for seating, and overlooks the dining and spacious family room. Show off the kitchen with the stainless-steel dishwasher, microwave, gas range, and granite to top it off. The front room is large enough for an additional living and dining, and a perfect space to greet guests. Upstairs are three large bedrooms - two have walk-in closets - a full bathroom and large loft. The owner's suite has two walk-in closets and its own connected bathroom. Don't forget to ask about the Smart Home Package included in this home!

About This Community

The Northwest is perfect for the chef & the family. This floorplan showcases peninsula and an island with room for seating, and overlooks the dining and spacious family room. Show off the kitchen with the stainless-steel dishwasher, microwave, gas range, and granite to top it off. The front room is large enough for an additional living and dining, and a perfect space to greet guests. Upstairs are three large bedrooms - two have walk-in closets - a full bathroom and large loft. The owner's suite has two walk-in closets and its own connected bathroom. Don't forget to ask about the Smart Home Package included in this home!

20431 Beachfield Lane
MILFORD, DE 19963



Floorplans

