



Powered by [newhomesguide.com](https://www.newhomesguide.com)



Base Price

\$440,990

3 Beds | 2 Baths | 1 Half Bath | 2 Levels | 2 Garage

About This Plan

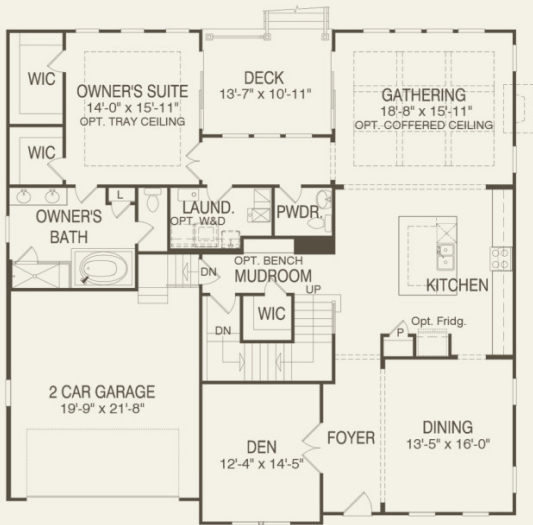
St. Lucie top features include: The St Lucie is known for its expansive open common space, ideal for entertaining. The dining room flows into the kitchen, gathering room and the back porch. Expand your space by adding a deck. Enjoy elegant finishes throughout, including hardwood.; First floor owner's suite; Loft

About This Community

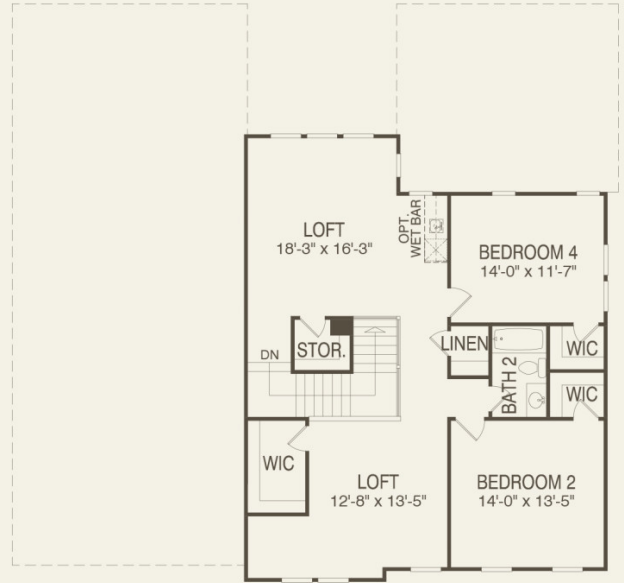
St. Lucie top features include: The St Lucie is known for its expansive open common space, ideal for entertaining. The dining room flows into the kitchen, gathering room and the back porch. Expand your space by adding a deck. Enjoy elegant finishes throughout, including hardwood.; First floor owner's suite; Loft



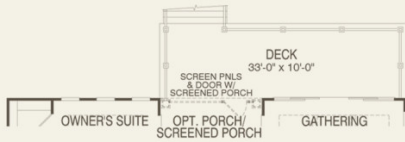
Floorplans



First Floor



Second Floor



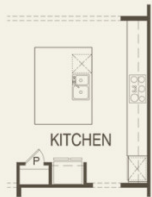
Optional Rear Deck Extension



Optional Owner's Bath 1
w/ Free Standing Tub



Optional Sunroom



Optional
Gourmet Kitchen



Optional Porch/
Screened Porch w/
2nd Floor Deck



Optional Bedroom 3
w/ Bath 3



Optional Porch / Screened Porch
w/ Opt. 1st Floor Porch



Optional Deck w/
Opt. 1st Floor Porch