



Powered by [newhomesguide.com](https://newhomesguide.com)



Base Price

**\$457,900**

**3 Beds | 2 Baths | 1 Half Bath | 2 Garage**

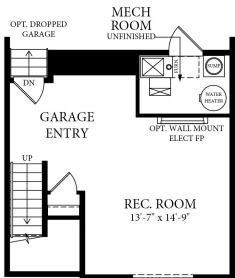
## About This Plan

The Maxwell gives an open and spacious feel with 9' ceilings on the main level. Create tray ceilings in the bedrooms for up to 9' ceilings on the second level. The owner's suite features dual sinks and a large walk-in closet, with an optional soaking tub and separate shower. Want a fourth bedroom? The lower level recreation area can become one complete bedroom with full bath.

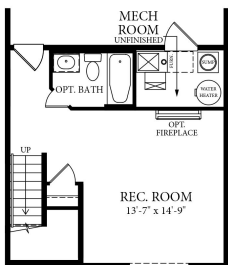
## About This Community

The Maxwell gives an open and spacious feel with 9' ceilings on the main level. Create tray ceilings in the bedrooms for up to 9' ceilings on the second level. The owner's suite features dual sinks and a large walk-in closet, with an optional soaking tub and separate shower. Want a fourth bedroom? The lower level recreation area can become one complete bedroom with full bath.

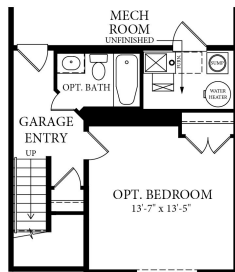
## Floorplans



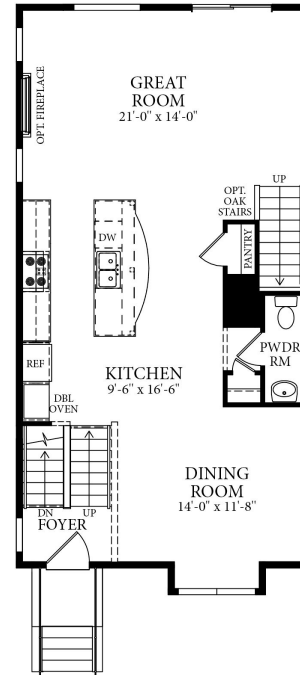
LOWER LEVEL



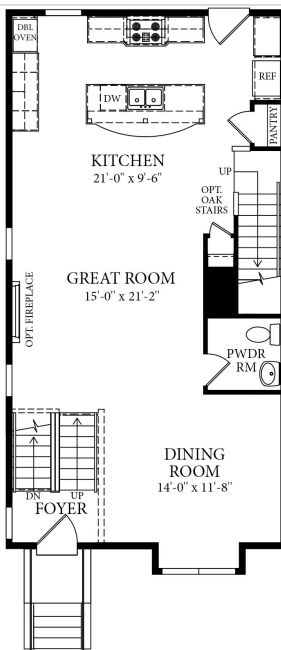
LOWER LEVEL WITH  
OPTIONAL FULL BATH



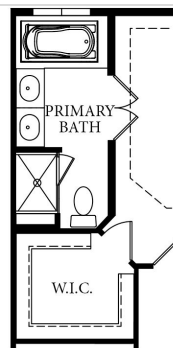
LOWER LEVEL WITH OPTIONAL  
BEDROOM AND FULL BATH



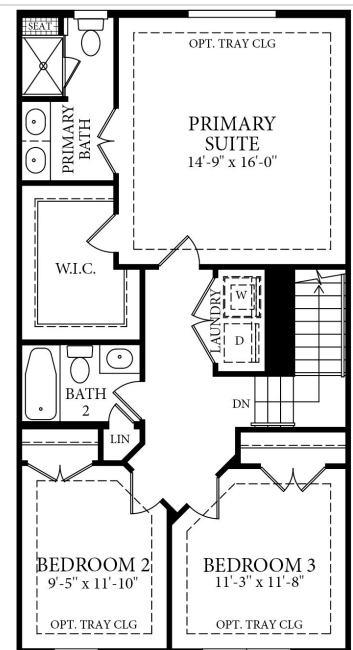
FIRST FLOOR PLAN



FIRST FLOOR WITH  
OPTIONAL REAR KITCHEN



OPT. PRIMARY BATH



SECOND FLOOR PLAN