



Powered by [newhomesguide.com](https://www.newhomesguide.com)



Base Price

\$262,990

3 Beds | 2 Baths | 2 Garage

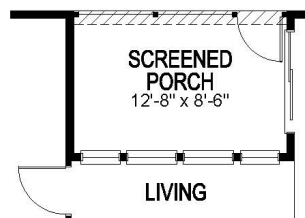
About This Plan

The Amelia is a contemporary, open-concept floorplan with a well-appointed kitchen featuring granite countertops, and a large island perfect for bar-style eating and entertaining. A large master suite situated at the back of the home for privacy, includes a walk-in closet and double vanity. Towards the front of the home, two bedrooms share a full bathroom. Enjoy outdoor living space with a covered patio off of the living room. Pictures, photographs, colors, features, and sizes are for illustration purposes only and will vary from the homes as built. Home and community information, including pricing, included features, terms, availability, and amenities are subject to change prior to sale and at any time without notice or obligation.

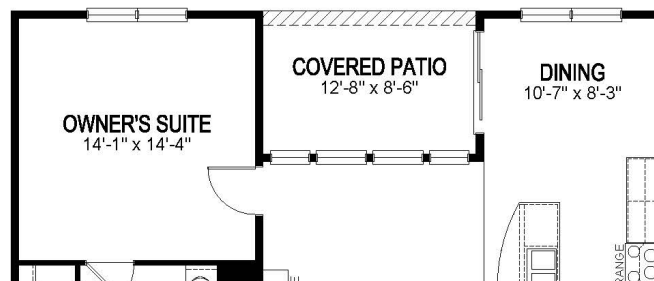
About This Community

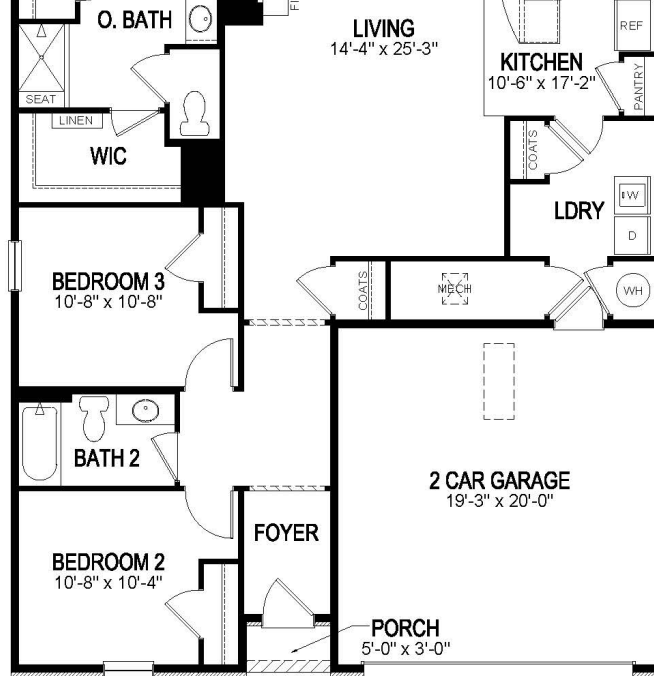
The Amelia is a contemporary, open-concept floorplan with a well-appointed kitchen featuring granite countertops, and a large island perfect for bar-style eating and entertaining. A large master suite situated at the back of the home for privacy, includes a walk-in closet and double vanity. Towards the front of the home, two bedrooms share a full bathroom. Enjoy outdoor living space with a covered patio off of the living room. Pictures, photographs, colors, features, and sizes are for illustration purposes only and will vary from the homes as built. Home and community information, including pricing, included features, terms, availability, and amenities are subject to change prior to sale and at any time without notice or obligation.

Floorplans



Opt Screened Porch





FIRST FLOOR