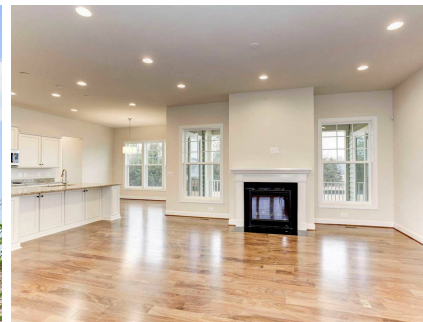


**11511 Osprey Trail**  
Spotsylvania, VA 22551



Powered by [newhomesguide.com](https://newhomesguide.com)

Single-Family



**\$470,301**

**4 Beds | 3 Baths | 1 Half Bath | 3 Levels | 2 Garage | 3,276 Sq Ft**

## About This House

From the flagstone covered front porch to the large rear lanai, the Charlotte is the epitome of main level living charm. The foyer opens to the spacious dining room with tray ceiling. The main living of the area of the home is overlooked by both the kitchen and dining room and features a beautiful 2-sided gas fireplace and light hardwood flooring. The kitchen's large granite island is the perfect place to entertain or prepare a large meal. There are white 42" maple cabinets, gas appliances, and double wall ovens. The covered lanai can be accessed by both the breakfast nook and the owner's suite. The owner's suite is located near the rear of the home for maximum privacy. It features a large sitting room, tray ceiling, and spa-like bathroom with dual vanities, separate tub, and large seated glass

## About This Community

From the flagstone covered front porch to the large rear lanai, the Charlotte is the epitome of main level living charm. The foyer opens to the spacious dining room with tray ceiling. The main living of the area of the home is overlooked by both the kitchen and dining room and features a beautiful 2-sided gas fireplace and light hardwood flooring. The kitchen's large granite island is the perfect place to entertain or prepare a large meal. There are white 42" maple cabinets, gas appliances, and double wall ovens. The covered lanai can be accessed by both the breakfast nook and the owner's suite. The owner's suite is located near the rear of the home for maximum privacy. It features a large sitting room, tray ceiling, and spa-like bathroom with dual vanities, separate tub, and large seated glass