



Base Price

\$409,900

3 Beds | 2 Baths | 2 Garage

About This Plan

None

About This Community

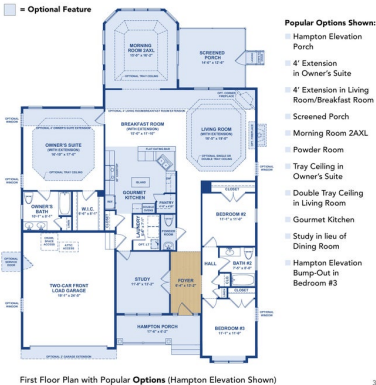
None

Floorplans

THE CARTWRIGHT

FIRST FLOOR PLAN WITH POPULAR OPTIONS

You can extend the first floor to add more space in the Cartwright by adding a choice of structural options. From an owner's suite extension and sitting room, to a breakfast nook extension or the light-filled morning room, you have many options to get more light and more room. You also can choose to extend the front of the house, gaining space in the dining room.



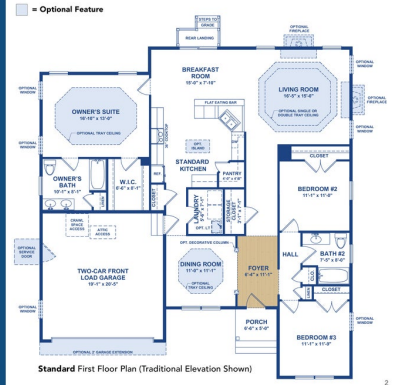
3

THE CARTWRIGHT

FIRST FLOOR PLAN

Welcome Home To The Cartwright

The Cartwright is a floor plan that combines some of the best features of our other plans into one terrific package. With a starting square footage of over 1,800 and available options such as a powder room and an amazing owner's suite, this plan has something to offer everyone. The single level plan is pictured right. A large entry foyer opens up to a formal dining room or ahead to the spacious living room. An optional tray ceiling detail accentuates the bright and open space.

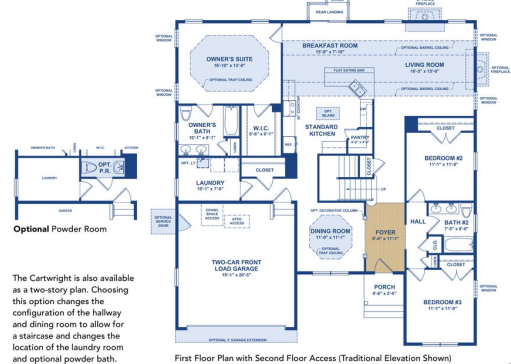


2

THE CARTWRIGHT

FIRST FLOOR PLAN WITH SECOND FLOOR ACCESS

Optional Feature

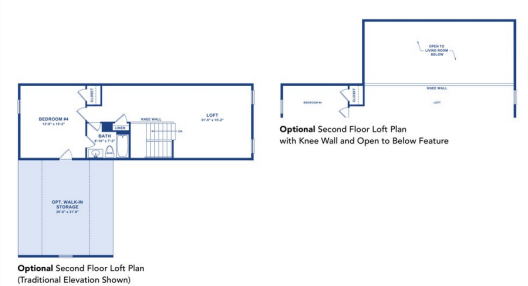


4

THE CARTWRIGHT

SECOND FLOOR PLAN OPTIONS

Optional Feature

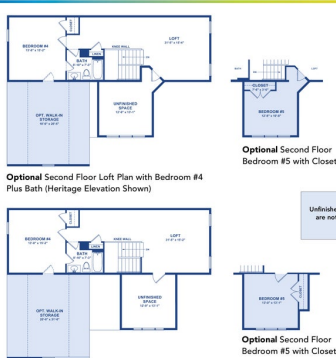


5

THE CARTWRIGHT

SECOND FLOOR PLAN OPTIONS

Optional Feature



NOTE:
Unfinished Space & Bedroom #5 option are not included available with the Traditional elevation.

6