



Powered by newhomesguide.com



Base Price

\$329,900

3 Beds | 2 Baths | 2 Garage

About This Plan

The Abbott model features an owner's suite with bath, two additional bedrooms, great room, dining area, open kitchen and more.

About This Community

The Abbott model features an owner's suite with bath, two additional bedrooms, great room, dining area, open kitchen and more.

Floorplans

THE ABBOTT

Welcome Home to The Abbott

Compact without compromise is the perfect way to describe The Abbott.

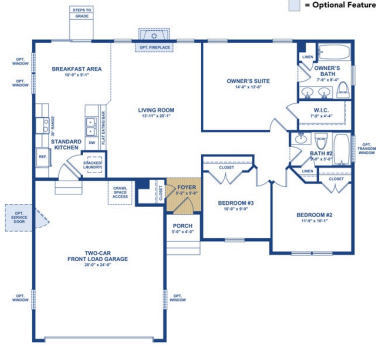
While The Abbott is our smallest home plan, you don't have to sacrifice all of the terrific features Insight Homes is known for just to down-size.

You have all of the energy efficient features, plus all-wood cabinetry and granite in the kitchen, a hardwood foyer, super low-E windows and a host of terrific options to personalize your home to your tastes.

All dimensions are approximate. Floor plans are subject to change without notice. Floor plans are subject to change without notice. Floor plans are subject to change without notice.

FIRST FLOOR PLAN

Optional Feature



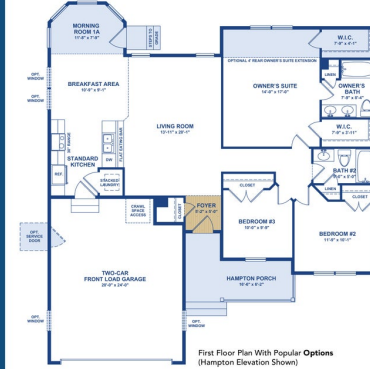
Standard First Floor Plan (Traditional Elevation Shown)

2

THE ABBOTT

FIRST FLOOR OPTIONS

Optional Feature



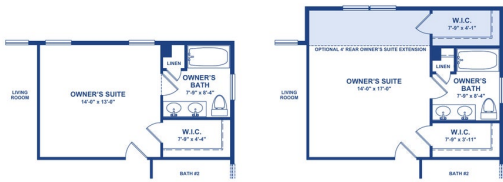
- Popular Options Shown:
- Morning Room 1A
 - Owner's Suite Extension
 - Hampton Porch
 - Windows in Breakfast Area
 - Windows in Garage
 - Transom Window in Bath #2
 - Service Door in Garage

3

THE ABBOTT

OWNER'S SUITE EXTENSION OPTION

Optional Feature



Standard Owner's Suite

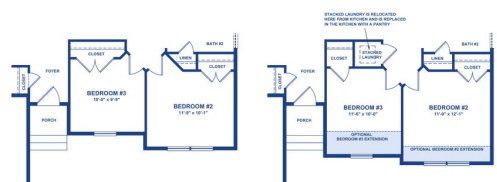
Optional Owner's Suite Extension

4

THE ABBOTT

BEDROOM EXTENSION OPTIONS

Optional Feature



Standard Bedroom #2 and Bedroom #3

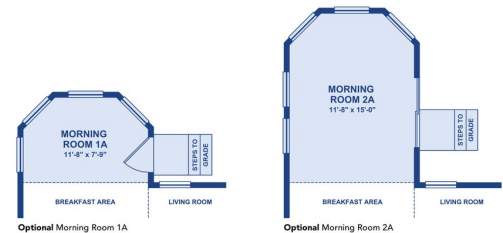
Optional Bedroom #2 and Bedroom #3 Extension

5

THE ABBOTT

ANGLED MORNING ROOM OPTIONS

Optional Feature



Optional Morning Room 1A

Optional Morning Room 2A

6