



Powered by [newhomesguide.com](https://newhomesguide.com)



Base Price

**\$506,900**

**3 Beds | 2 Baths | 2 Garage**

## About This Plan

The Jerry model can be built as a 3 to 6 bedroom home. The home features an owner's suite, with luxury bath, formal dining room, available chef's kitchen, breakfast area, laundry room and more.

## About This Community

The Jerry model can be built as a 3 to 6 bedroom home. The home features an owner's suite, with luxury bath, formal dining room, available chef's kitchen, breakfast area, laundry room and more.

# Floorplans

## THE JERRY

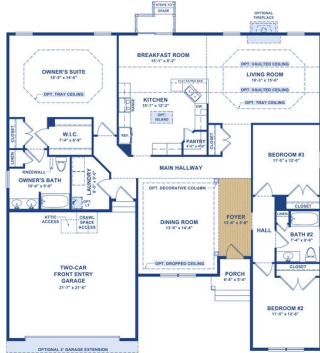
Thoughtfully Designed To Fit Your Lifestyle.

With a formal Dining Room and a generously sized Kitchen and Living Room, the Jerry is a versatile and comfortable home with three bedrooms on the main floor. Perfectly designed for entertaining with a choice of two kitchen options, the Jerry easily accommodates all families, big and small.

The secluded Owner's Suite is tucked away for added privacy and includes a large Bath and walk-in closet. The other two Bedrooms share a hall Bath. Options like a Powder Bath, Morning Room and second floor configurations are also available to further customize the Jerry to fit your lifestyle.

All dimensions are approximate. Floor plans are artist's conceptions and may vary slightly from actual construction. Plans and elevations may show options not included in the base price. Details subject to change without notice.

### FIRST FLOOR PLAN



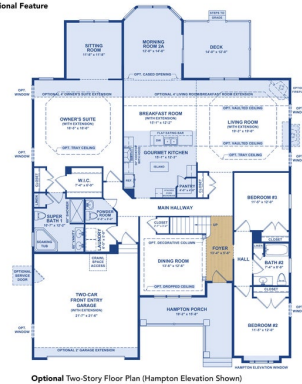
Standard One-Story Floor Plan (Traditional Elevation Shown)

2

## THE JERRY

### POPULAR FIRST FLOOR OPTIONS

■ = Optional Feature



Optional Two-Story Floor Plan (Hampton Elevation Shown)

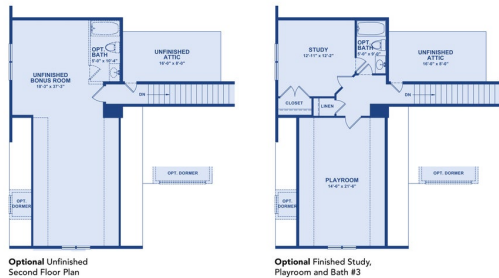
3

- Popular Options Shower:
- Owner's Suite Sitting Room
  - Owner's Suite Extension
  - Owner's Suite Super Bath 1
  - Owner's Suite Tray Ceiling
  - Angled Morning Room 2A
  - Breakfast Room Extension
  - Breakfast Room/Living Room Vaulted Ceiling
  - Living Room Extension
  - Living Room Tray Ceiling
  - Gourmet Kitchen
  - Powder Room
  - Hampton Elevation (Porch & Bedroom #2 Window)
  - Garage Extension

## THE JERRY

### TWO-STORY OPTIONS

■ = Optional Feature



Optional Unfinished Second Floor Plan

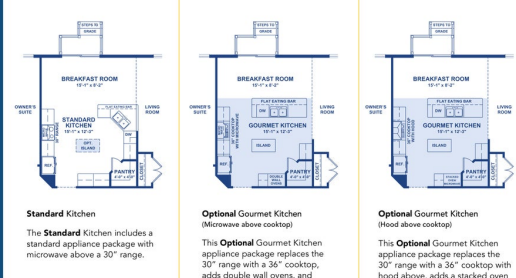
Optional Finished Study, Playroom and Bath #3

4

## THE JERRY

### GOURMET KITCHEN OPTIONS

■ = Optional Feature



Standard Kitchen

The Standard Kitchen includes a standard appliance package with microwave above a 30" range.

Optional Gourmet Kitchen (Microwave above cooktop)

This Optional Gourmet Kitchen appliance package replaces the 30" range with a 36" cooktop, adds double wall ovens, and an island.

Optional Gourmet Kitchen (Hood above cooktop)

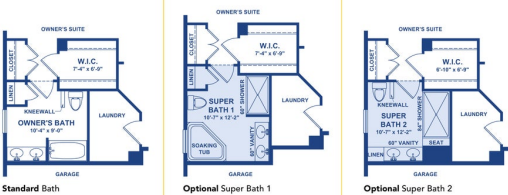
This Optional Gourmet Kitchen appliance package replaces the 30" range with a 36" cooktop with hood above, adds a stacked oven and microwave, and an island.

5

## THE JERRY

### OWNER'S BATH OPTIONS

■ = Optional Feature



Standard Bath

The Standard Bath includes a 60" cultured marble vanity with dual sinks and fiberglass tub/shower combination.

Optional Super Bath 1

Optional Super Bath 1 includes a 60" tile-surround shower with glass bypass shower door, a 60" cultured marble vanity with dual sinks and separate 60" soaking tub with tile deck.

Optional Super Bath 2

Optional Super Bath 2 replaces the standard tub with a 7-foot shower the standard tub with a 7-foot shower tiled-to-ceiling with bench seat, mosaic tiled shower floor, semi-frameless glass shower door and a recessed light over the shower.

6