



Powered by newhomesguide.com



Base Price

\$605,900

4 Beds | 3 Baths | 2 Garage

About This Plan

A two-story floorplan featuring 4 bedrooms, 3 baths, living room, large kitchen, formal dining room, breakfast room with eating bar, 2 car garage and the ability to expand to 6 bedrooms.

About This Community

A two-story floorplan featuring 4 bedrooms, 3 baths, living room, large kitchen, formal dining room, breakfast room with eating bar, 2 car garage and the ability to expand to 6 bedrooms.

Floorplans

THE PETERMAN II

Welcome Home To The Peterman II

As soon as you enter the foyer you will love the flexibility and charm of the open concept living area of this home.

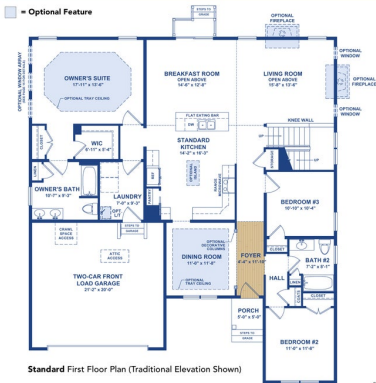
The first floor large private Owner's Suite includes a large walk-in closet as well as a spacious bath with dual sink vanity. Two more Bedrooms share a bath and private hall, also on the first floor.

The second floor boasts an open Loft that overlooks the Living and Breakfast room as well as an additional Bedroom and Bath.

The Peterman II is designed for how you live your life and is perfect for larger families or for entertaining guests.

All dimensions are approximate. Floor plans are artist's conceptions and may vary slightly from actual construction. Plans and dimensions may show options not included in the base price. Details subject to change without notice.

FIRST FLOOR PLAN

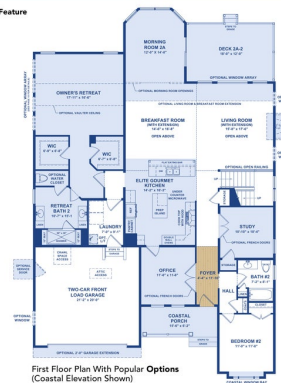


2

THE PETERMAN II

FIRST FLOOR OPTIONS

Optional Feature



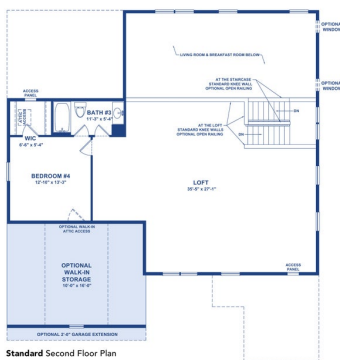
- Popular Options Shown:
- Coastal Elevation Porch and Bedroom #2 Window Bay
 - Garage Service Door
 - Deck 2A-2
 - 2" Garage Extension
 - Study in lieu of Bedroom #3
 - Office in lieu of Dining Room
 - Elite Gourmet Kitchen with Pantry Cabinet
 - Owner's Retreat with Owner's Retreat Bath 2
 - Vaulted Ceiling for Owner's Retreat
 - Breakfast Room/Living Room Extension
 - Living Room Arched Window Array
 - Angled Morning Room 2A

3

THE PETERMAN II

SECOND FLOOR PLAN

Optional Feature

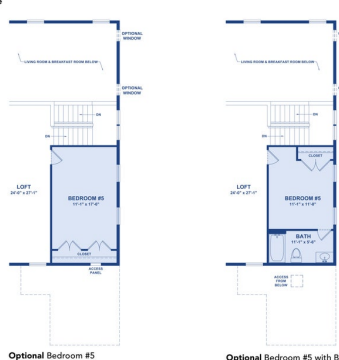


4

THE PETERMAN II

SECOND FLOOR PLAN OPTIONS

Optional Feature



5

THE PETERMAN II

OWNER'S BATH OPTIONS

Optional Feature

Standard Bath

The Standard Bath includes a 60" cultured marble vanity with dual sinks and fiberglass tub/shower combination.



Optional Bath with Water Closet

Optional Bath with Water Closet includes an enclosed water closet for added privacy.



Optional Super Bath 1

Optional Super Bath 1 includes a 60" tiled wall shower with glass bypass shower door and separate soaking tub with tile deck.



Optional Super Bath 2

Optional Super Bath 2 replaces the standard tub with a 7-foot shower tiled-to-ceiling with bench seat, mosaic tiled shower floor, semi-frameless glass shower door,



6