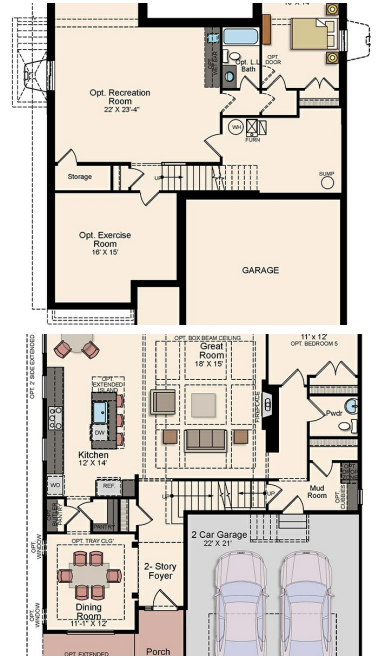


Powered by [newhomesguide.com](https://newhomesguide.com)



Base Price

\$

4 Beds | 2 Baths | 1 Half Bath | 2 Garage

## About This Plan

The Taylor is an open concept craftsman plan featuring 3,094 - 5,196 sq. ft. with a loggia and a luxurious 2nd floor owners suite. Enjoy 4 - 5 Bedrooms, 2.5 - 4.5 Bathrooms and a 2-car garage. Additional options are available!

## About This Community

The Taylor is an open concept craftsman plan featuring 3,094 - 5,196 sq. ft. with a loggia and a luxurious 2nd floor owners suite. Enjoy 4 - 5 Bedrooms, 2.5 - 4.5 Bathrooms and a 2-car garage. Additional options are available!



OPT. FINISHED BASEMENT

FIRST FLOOR

## SECOND FLOOR

SECOND FLOOR PLAN W/ OPT. 4' REAR EXTENSION

Partial Plan W/Opt.  
Shared Bath 2