



Base Price

\$785,995

3 Beds | 2 Baths | 1 Half Bath | 2 Garage

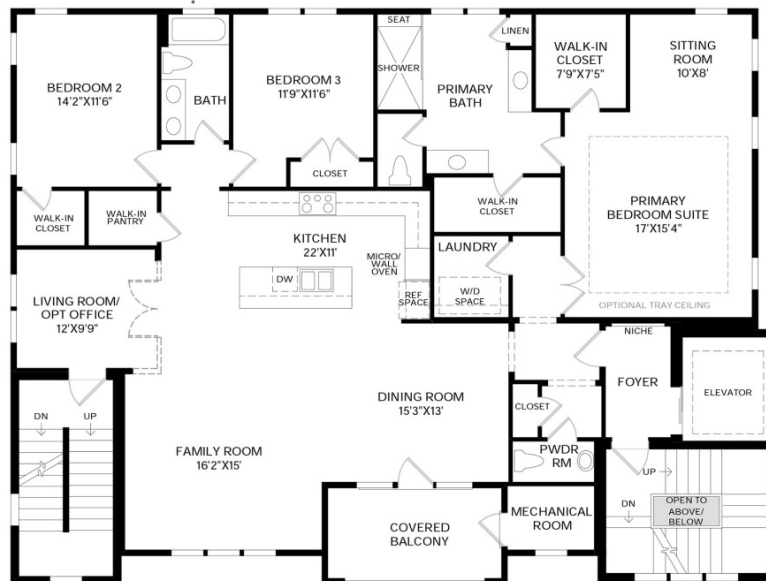
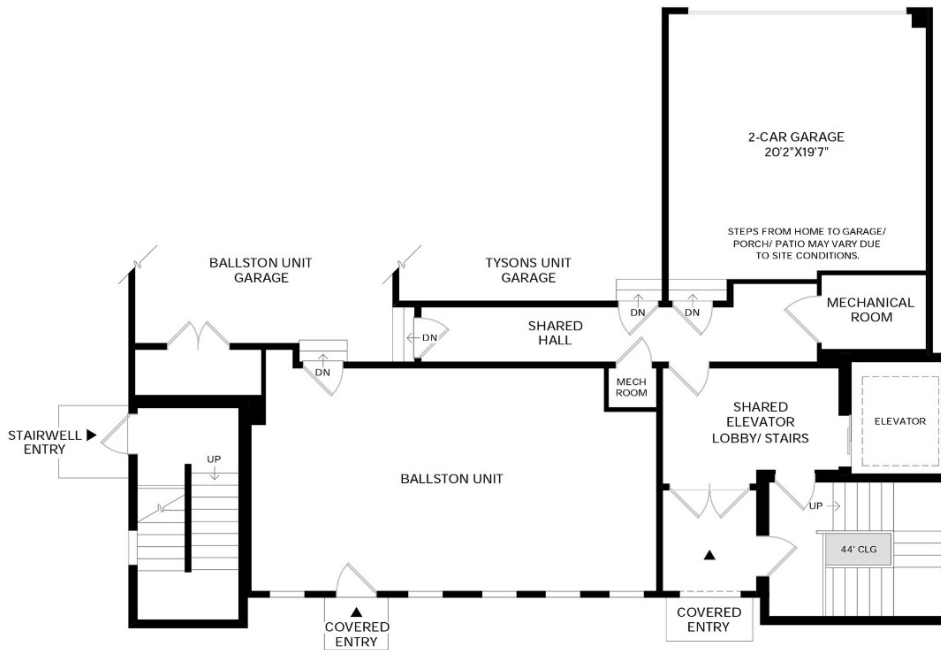
About This Plan

Modern deluxe. The Eisenhower's inviting covered stairwell entry flows up the welcoming stairs to the living level, opening to a bright living room, spacious great room and dining room, and desirable covered balcony. The well-designed gourmet kitchen is complete with a large center island with breakfast bar, plenty of counter and cabinet space, and sizable pantry. The beautiful primary bedroom suite is highlighted by a sitting room, dual walk-in closets, and spa-like primary bath with dual-sink vanity, large luxe shower with seat, linen storage, and private water closet. Secondary bedrooms feature generous closets and shared hall bath with dual-sink vanity. Additional highlights include shared elevator access and private elevator foyer on the living level, convenient powder room, centrally

About This Community

Modern deluxe. The Eisenhower's inviting covered stairwell entry flows up the welcoming stairs to the living level, opening to a bright living room, spacious great room and dining room, and desirable covered balcony. The well-designed gourmet kitchen is complete with a large center island with breakfast bar, plenty of counter and cabinet space, and sizable pantry. The beautiful primary bedroom suite is highlighted by a sitting room, dual walk-in closets, and spa-like primary bath with dual-sink vanity, large luxe shower with seat, linen storage, and private water closet. Secondary bedrooms feature generous closets and shared hall bath with dual-sink vanity. Additional highlights include shared elevator access and private elevator foyer on the living level, convenient powder room, centrally

Floorplans



* DENOTES HIGH WINDOW

LIVING LEVEL-3RD FLOOR
10' CEILING HEIGHT