



Base Price

**\$865,995**

**3 Beds | 2 Baths | 2 Half Baths | 2 Garage**

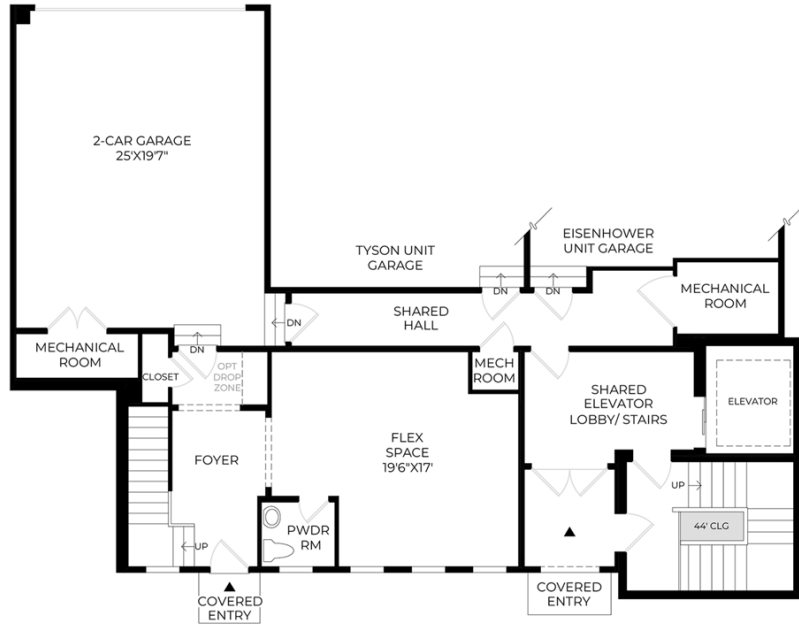
## About This Plan

Contemporary charm. The Ballston's welcoming covered entry and foyer reveal a generous flex space and the inviting stairs to the living level, opening to the spacious great room, dining room, and desirable front covered balcony. The well-designed gourmet kitchen is highlighted by a large center island with breakfast bar, plenty of counter and cabinet space, and ample pantry. The lovely primary bedroom suite is complete with a sitting room, dual walk-in closets, and spa-like primary bath with dual-sink vanity, large luxe shower with seat, linen storage, and private water closet. Secondary bedrooms feature sizable closets and shared hall bath with dual-sink vanity. Additional highlights include a bright living room off the great room, shared elevator access and private elevator.

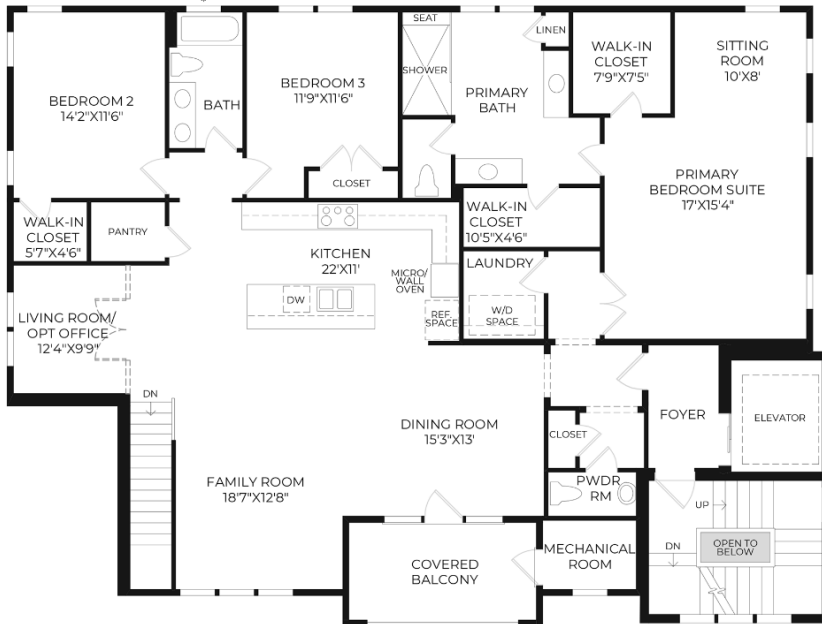
## About This Community

Contemporary charm. The Ballston's welcoming covered entry and foyer reveal a generous flex space and the inviting stairs to the living level, opening to the spacious great room, dining room, and desirable front covered balcony. The well-designed gourmet kitchen is highlighted by a large center island with breakfast bar, plenty of counter and cabinet space, and ample pantry. The lovely primary bedroom suite is complete with a sitting room, dual walk-in closets, and spa-like primary bath with dual-sink vanity, large luxe shower with seat, linen storage, and private water closet. Secondary bedrooms feature sizable closets and shared hall bath with dual-sink vanity. Additional highlights include a bright living room off the great room, shared elevator access and private elevator.

## Floorplans



Garage Level - 1st Floor  
9' CEILING HEIGHT



\* DENOTES HIGH WINDOW

LIVING LEVEL-2ND FLOOR  
10' CEILING HEIGHT