



Base Price

**\$578,950**

**3 Beds | 2 Baths | 1 Half Bath | 1 Garage**

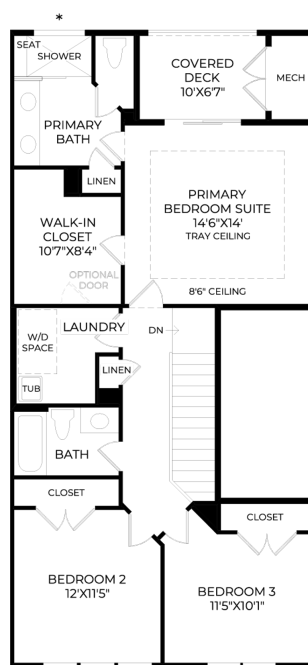
## About This Plan

Urban design, deluxe style. The Sully's inviting covered entry and welcoming foyer reveal the charming stairs and spacious great room. The well-equipped kitchen is complete with a large center island with breakfast bar, plenty of counter and cabinet space, and sizable pantry. The sophisticated primary bedroom suite is enhanced by an elegant tray ceiling, huge walk-in closet, and spa-like primary bath with dual-sink vanity, luxe glass-enclosed shower with seat, linen storage, and private water closet. Ample secondary bedrooms feature roomy closets and shared full hall bath. Additional highlights include a convenient powder room, centrally located laundry, and additional storage.

## About This Community

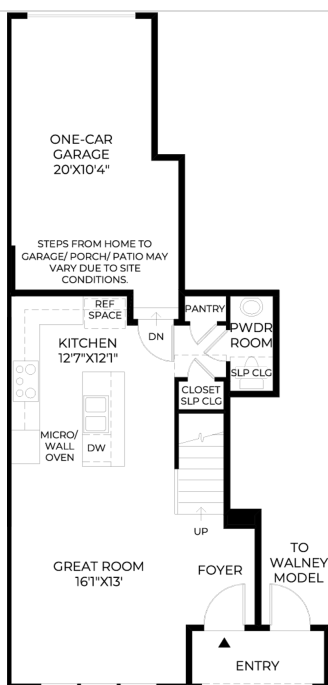
Urban design, deluxe style. The Sully's inviting covered entry and welcoming foyer reveal the charming stairs and spacious great room. The well-equipped kitchen is complete with a large center island with breakfast bar, plenty of counter and cabinet space, and sizable pantry. The sophisticated primary bedroom suite is enhanced by an elegant tray ceiling, huge walk-in closet, and spa-like primary bath with dual-sink vanity, luxe glass-enclosed shower with seat, linen storage, and private water closet. Ample secondary bedrooms feature roomy closets and shared full hall bath. Additional highlights include a convenient powder room, centrally located laundry, and additional storage.

## Floorplans



\* DENOTES HIGH WINDOW

**BEDROOM LEVEL**  
9' CEILING HEIGHT



**LIVING LEVEL**  
9' CEILING HEIGHT