

Base Price

\$530,000**3 Beds | 2 Baths | 1 Half Bath | 2 Garage**

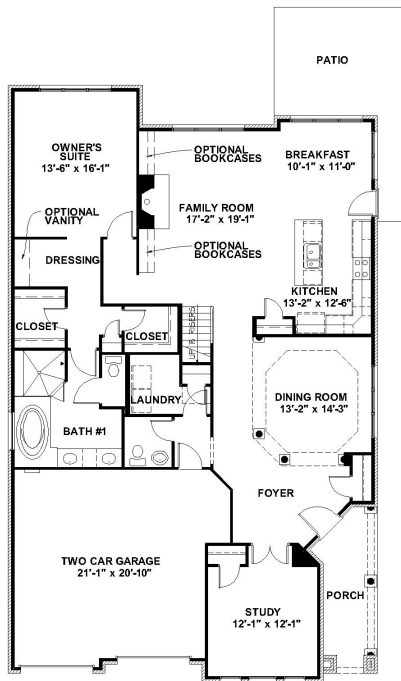
About This Plan

"We invite you to customize our plans to personalize your home" \u00a0\u00a0 The Ashmont features: Four sides brick with covered front porch Two-car attached garage Spacious open Kitchen and Family room First floor study with option to convert to bedroom and attached full bathroom\u00a0 Two bedrooms and a bath upstairs with plenty of storage Room to expand on the second level Designer owner's suite bath with tub and separate tile shower Optional Sunroom

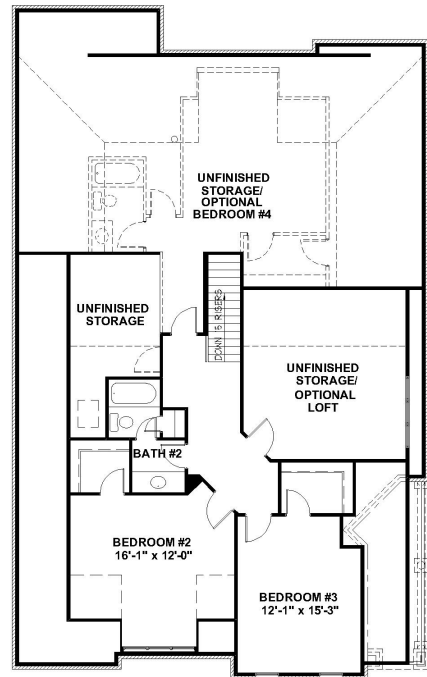
About This Community

"We invite you to customize our plans to personalize your home" \u00a0\u00a0 The Ashmont features: Four sides brick with covered front porch Two-car attached garage Spacious open Kitchen and Family room First floor study with option to convert to bedroom and attached full bathroom\u00a0 Two bedrooms and a bath upstairs with plenty of storage Room to expand on the second level Designer owner's suite bath with tub and separate tile shower Optional Sunroom

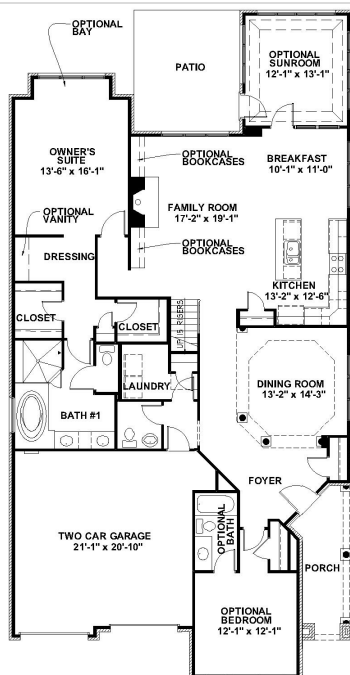
Floorplans



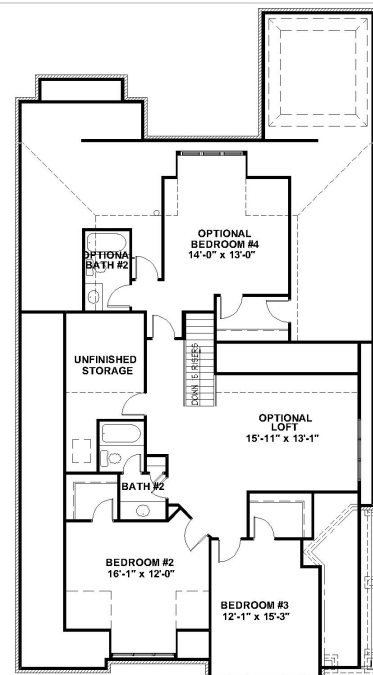
STANDARD FIRST FLOOR PLAN



STANDARD SECOND FLOOR PLAN



OPTIONAL FIRST FLOOR PLAN



OPTIONAL SECOND FLOOR PLAN