

Base Price

\$619,900

3 Beds | 2 Baths | 1 Half Bath | 2 Garage

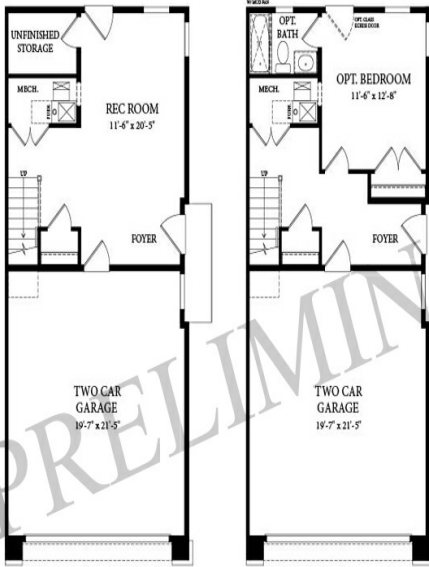
About This Plan

The Lenox at Downtown Brambleton is sophistication and functionality wrapped up in one home. Strategically designed featuring 2,256 square feet of open living space. The lower level with included rec room also offers an array of opportunities for you to personalize this space to fit your lifestyle. The chef inspired rear kitchen with perfectly placed windows is truly the star of this expansive first floor. A spacious great room and separate dining room make this home the ideal location for entertaining. Relax and rejuvenate on the second floor with a large primary suite featuring a luxurious spa-like bath and two roomy secondary bedrooms. Need more levels of living and lounging space? The optional third level with a loft and terrace is the perfect fit for you.

About This Community

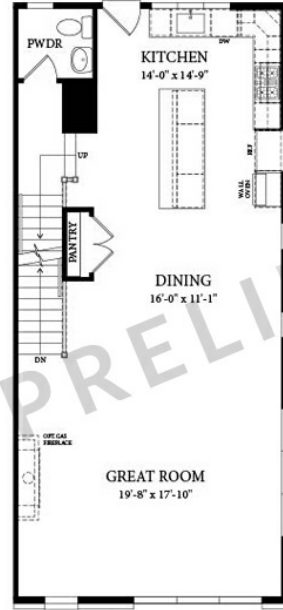
The Lenox at Downtown Brambleton is sophistication and functionality wrapped up in one home. Strategically designed featuring 2,256 square feet of open living space. The lower level with included rec room also offers an array of opportunities for you to personalize this space to fit your lifestyle. The chef inspired rear kitchen with perfectly placed windows is truly the star of this expansive first floor. A spacious great room and separate dining room make this home the ideal location for entertaining. Relax and rejuvenate on the second floor with a large primary suite featuring a luxurious spa-like bath and two roomy secondary bedrooms. Need more levels of living and lounging space? The optional third level with a loft and terrace is the perfect fit for you.

Floorplans



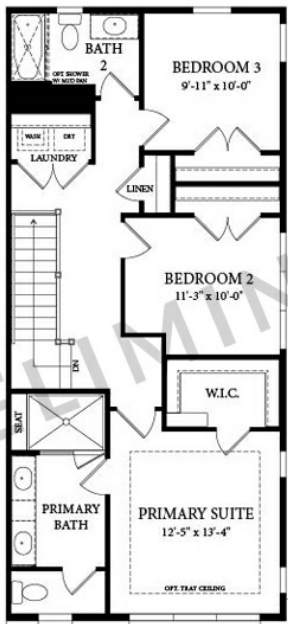
LOWER LEVEL PLAN

ALTERNATE LOWER LEVEL PLAN
WITH OPTIONAL BEDROOM
AND FULL BATH

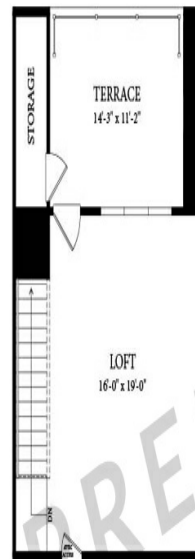


FIRST FLOOR PLAN
SHOWN W/ ELEVATION 01

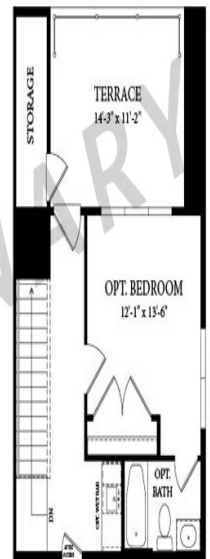
ELEVATION 02



SECOND FLOOR PLAN
SHOWN W/ ELEVATION 01



OPTIONAL THIRD FLOOR PLAN



OPTIONAL ALTERNATE
THIRD FLOOR PLAN WITH
OPTIONAL BEDROOM AND FULL BATH