



Powered by [newhomesguide.com](https://www.newhomesguide.com)



Base Price

\$679,900

3 Beds | 2 Baths | 1 Half Bath | 2 Garage

About This Plan

The Kramer model is a two-story home with a first-floor owner's suite, luxury bath, formal dining room, study, two-story living room, chef's kitchen, two additional bedrooms, and has an option for an additional owner's suite and unfinished bonus room.

About This Community

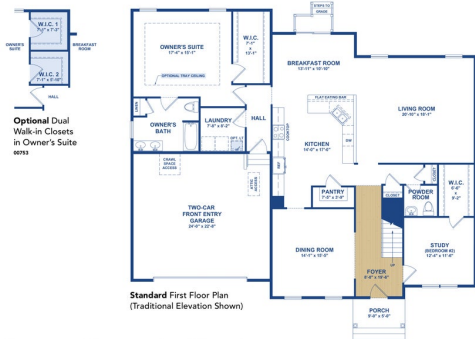
The Kramer model is a two-story home with a first-floor owner's suite, luxury bath, formal dining room, study, two-story living room, chef's kitchen, two additional bedrooms, and has an option for an additional owner's suite and unfinished bonus room.

Floorplans

THE KRAMER

FIRST FLOOR PLAN

■ = Optional Feature

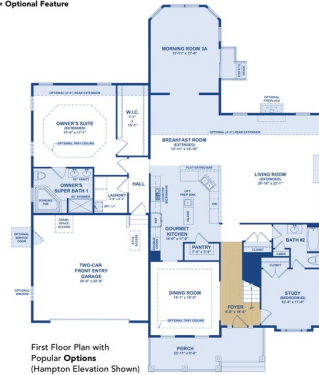


2

THE KRAMER

FIRST FLOOR PLAN WITH POPULAR OPTIONS

■ = Optional Feature



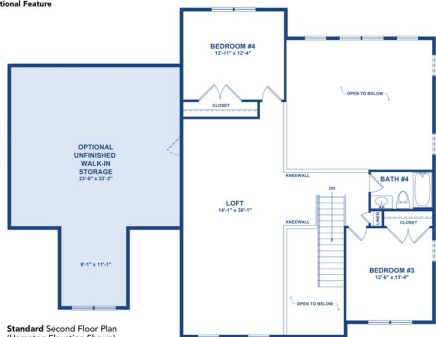
- Popular Options Shown:**
- Hampton Elevation Porch
 - Extended Angled Morning Room 3A
 - Owner's Suite Rear Extension
 - Tray Ceiling in Owner's Suite
 - Owner's Super Bath 1
 - Gourmet Kitchen
 - Living Room/Breakfast Room Extension
 - Tray Ceiling in Dining Room
 - Study (Bedroom #2) with Full Bath

3

THE KRAMER

SECOND FLOOR PLAN

■ = Optional Feature

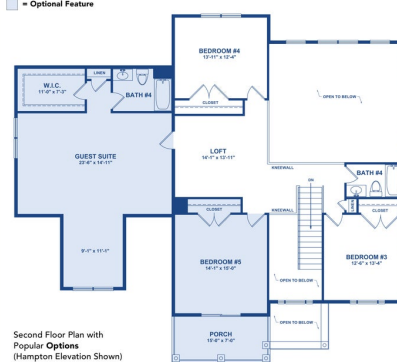


4

THE KRAMER

SECOND FLOOR PLAN WITH POPULAR OPTIONS

■ = Optional Feature



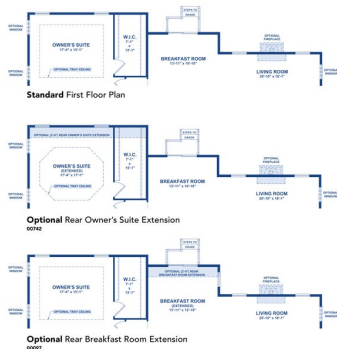
- Popular Options Shown:**
- Hampton Elevation Porch
 - Guest Suite
 - Bedroom #5

5

THE KRAMER

EXTENSION OPTIONS

■ = Optional Feature



6