



Powered by newhomesguide.com



Base Price

\$434,900

3 Beds | 2 Baths | 2 Garage

About This Plan

The Abbott model features an owner's suite with bath, two additional bedrooms, great room, dining area, open kitchen and more.

About This Community

The Abbott model features an owner's suite with bath, two additional bedrooms, great room, dining area, open kitchen and more.

Floorplans

THE ABBOTT

Welcome Home to The Abbott

Compact without compromise
is the perfect way to describe
The Abbott.

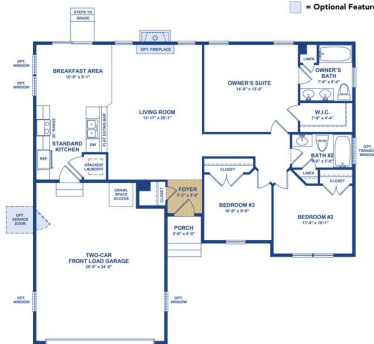
While The Abbott is our smallest home plan, you don't have to sacrifice all of the terrific features Insight Homes is known for just to down-size.

You have all of the energy efficient features, plus all-wood cabinetry and granite in the kitchen, a hardwood foyer, super low-E windows and a host of terrific options to personalize your home to your tastes. ■

All dimensions are approximate. Floor plans are artist's conception and may vary slightly from precise and most current blue prints and specifications. Plans and elevations may show options not included in the base price.

FIRST FLOOR PLAN

 = Optional Feature



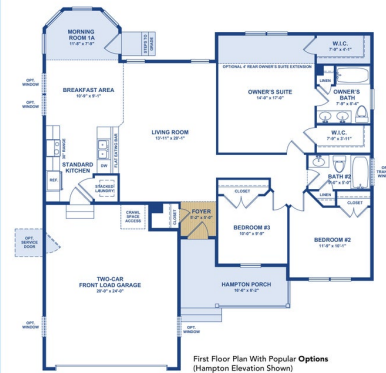
Standard First Floor Plan (Traditional Elevation Shown)

2

THE ABBOTT

FIRST FLOOR OPTIONS

 = Optional Feature



First Floor Plan With Popular Options
(Hampton Elevation Shown)

3

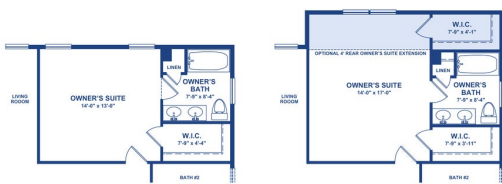
Popular Options Shown:

- Morning Room 1A
- Owner's Suite Extension
- Hampton Porch
- Windows in Breakfast Area
- Windows in Garage
- Transom Window in Bath #2
- Service Door in Garage

THE ABBOTT

OWNER'S SUITE EXTENSION OPTION

 = Optional Feature



Standard Owner's Suite

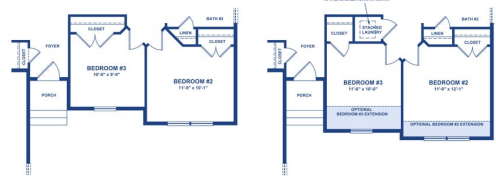
Optional Owner's Suite Extension

4

THE ABBOTT

BEDROOM EXTENSION OPTIONS

 = Optional Feature



Standard Bedroom #2 and Bedroom #3

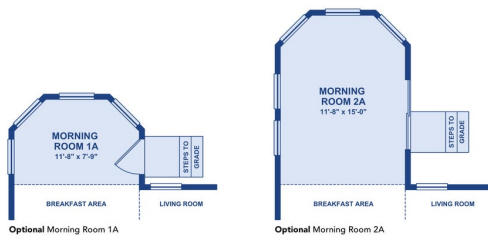
Optional Bedroom #2 and Bedroom #3 Extension

5

THE ABBOTT

ANGLED MORNING ROOM OPTIONS

 = Optional Feature



Optional Morning Room 1A

Optional Morning Room 2A

6