



Powered by [newhomesguide.com](https://newhomesguide.com)



Base Price

**\$574,900**

**3 Beds | 2 Baths | 2 Garage**

## About This Plan

Price includes carriage style garage door, front stone foundation, driveway entrance landscaping & premium Heritage elevation. A versatile single or two-story plan featuring a large, open kitchen, nook and living room. This home features three bedrooms on the main level including a private owner's suite and bath, opposite two bedrooms sharing a hall bath. A formal dining room is open to the entry foyer.

## About This Community

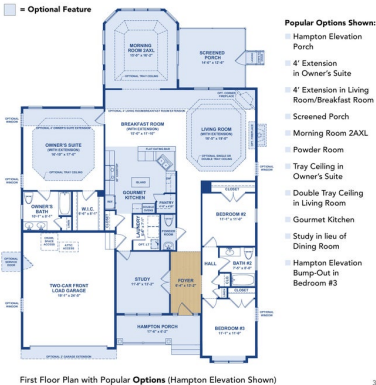
Price includes carriage style garage door, front stone foundation, driveway entrance landscaping & premium Heritage elevation. A versatile single or two-story plan featuring a large, open kitchen, nook and living room. This home features three bedrooms on the main level including a private owner's suite and bath, opposite two bedrooms sharing a hall bath. A formal dining room is open to the entry foyer.

# Floorplans

## THE CARTWRIGHT

### FIRST FLOOR PLAN WITH POPULAR OPTIONS

You can extend the first floor to add more space in the Cartwright by adding a choice of structural options. From an owner's suite extension and sitting room, to a breakfast nook extension or the light-filled morning room, you have many options to get more light and more room. You also can choose to extend the front of the house, gaining space in the dining room.



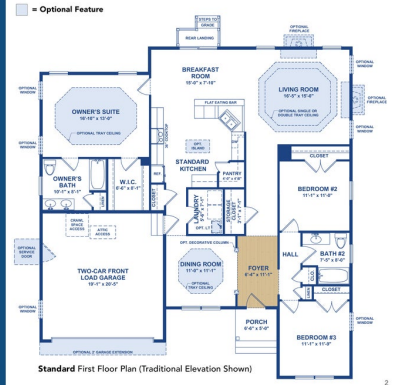
3

## THE CARTWRIGHT

### FIRST FLOOR PLAN

#### Welcome Home To The Cartwright

The Cartwright is a floor plan that combines some of the best features of our other plans into one terrific package. With a starting square footage of over 1,800 and available options such as a powder room and an amazing owner's suite, this plan has something to offer everyone. The single level plan is pictured right. A large entry foyer opens up to a formal dining room or ahead to the spacious living room. An optional tray ceiling detail accentuates the bright and open space.

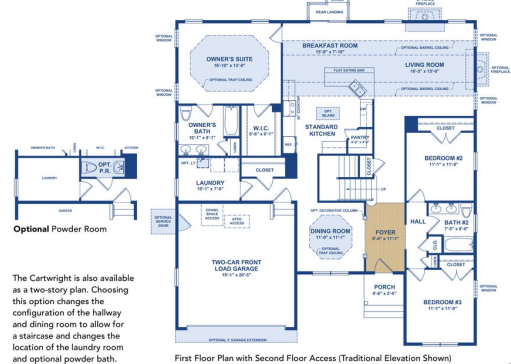


2

## THE CARTWRIGHT

### FIRST FLOOR PLAN WITH SECOND FLOOR ACCESS

**Optional Feature**

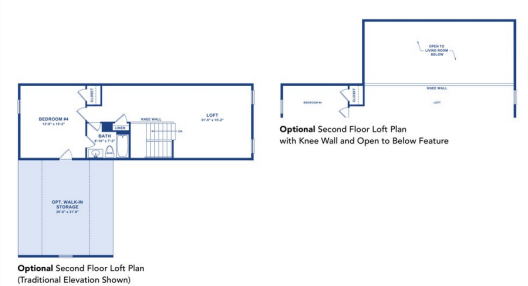


4

## THE CARTWRIGHT

### SECOND FLOOR PLAN OPTIONS

**Optional Feature**

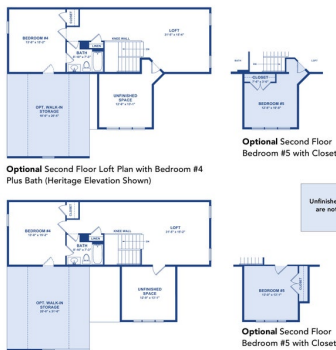


5

## THE CARTWRIGHT

### SECOND FLOOR PLAN OPTIONS

**Optional Feature**



NOTE:  
Unfinished Space & Bedroom #5 option are not included available with the Traditional elevation.

6