



Powered by [newhomesguide.com](https://www.newhomesguide.com)



Base Price

\$913,900

3 Beds | 4 Baths | 2 Garage

About This Plan

The Thayer was designed to capture the views in waterfront communities. It features outdoor decks and porches on all levels in the front and back of the home. The main living area is open and spacious making it perfect for entertaining and relaxing.

About This Community

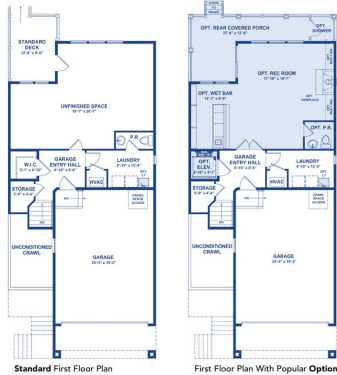
The Thayer was designed to capture the views in waterfront communities. It features outdoor decks and porches on all levels in the front and back of the home. The main living area is open and spacious making it perfect for entertaining and relaxing.

Floorplans

THE THAYER

FIRST FLOOR PLAN

■ = Optional Feature



Optional Corner Fireplace

- Popular Options Shown:**
- Fireplace with Built-Ins
 - Corner Fireplace
 - Covered Porch
 - Wet Bar
 - Rec Room with Powder Room
 - Elevator

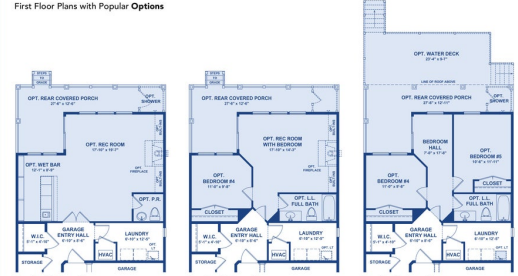
All dimensions are approximate. Floor plans are not to scale and may vary slightly from practice and specifications. Plans and elevations may show features not included in the base price. Details subject to change without notice.

2

THE THAYER

FIRST FLOOR OPTIONS

First Floor Plans with Popular Options



■ = Optional Feature

3

THE THAYER

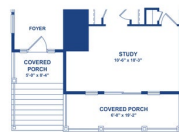
SECOND FLOOR PLAN

■ = Optional Feature

Standard Second Floor Plan (Elevation 1)



Standard Second Floor Plan (Elevation 2)

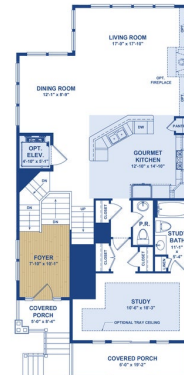


4

THE THAYER

SECOND FLOOR OPTIONS

■ = Optional Feature



Second Floor Plan With Popular Options

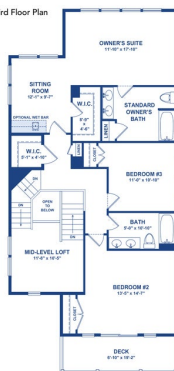
5

THE THAYER

THIRD FLOOR PLAN

■ = Optional Feature

Standard Third Floor Plan (Elevation 1)



Standard Third Floor Plan (Elevation 2)



6