



Base Price

**\$649,900**

**3 Beds | 2 Baths | 1 Half Bath | 2 Garage**

## About This Plan

The Kramer model is a two-story home with a first-floor owner's suite, luxury bath, formal dining room, study, two-story living room, chef's kitchen, two additional bedrooms, and has an option for an additional owner's suite and unfinished bonus room.

## About This Community

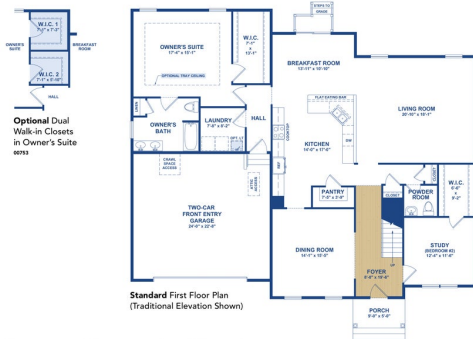
The Kramer model is a two-story home with a first-floor owner's suite, luxury bath, formal dining room, study, two-story living room, chef's kitchen, two additional bedrooms, and has an option for an additional owner's suite and unfinished bonus room.

# Floorplans

## THE KRAMER

### FIRST FLOOR PLAN

■ = Optional Feature

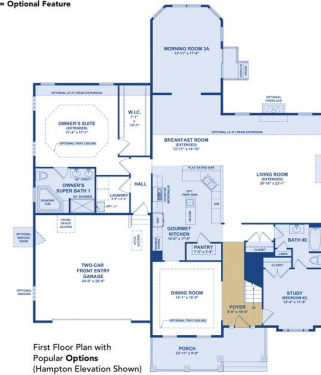


2

## THE KRAMER

### FIRST FLOOR PLAN WITH POPULAR OPTIONS

■ = Optional Feature



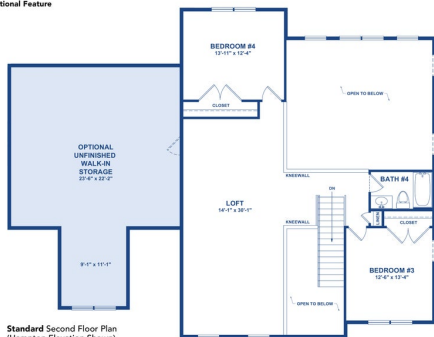
- Popular Options Shown:**
- Hampton Elevation Porch
  - Extended Angled Morning Room 3A
  - Owner's Suite Rear Extension
  - Tray Ceiling in Owner's Suite
  - Owner's Super Bath 1
  - Gourmet Kitchen
  - Living Room/Breakfast Room Extension
  - Tray Ceiling in Dining Room
  - Study (Bedroom #2) with Full Bath

3

## THE KRAMER

### SECOND FLOOR PLAN

■ = Optional Feature

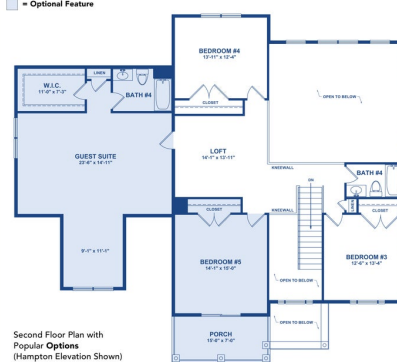


4

## THE KRAMER

### SECOND FLOOR PLAN WITH POPULAR OPTIONS

■ = Optional Feature



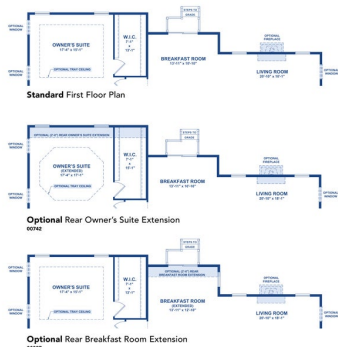
- Popular Options Shown:**
- Hampton Elevation Porch
  - Guest Suite
  - Bedroom #5

5

## THE KRAMER

### EXTENSION OPTIONS

■ = Optional Feature



6