



Powered by newhomesguide.com



Base Price

\$504,900

3 Beds | 2 Baths | 2 Garage

About This Plan

The Elaine model can be built as a 3 or 4 bedroom home. The home features a large owner's suite, 2 baths, living room, dining room, chef's kitchen, breakfast area, laundry room and more.

About This Community

The Elaine model can be built as a 3 or 4 bedroom home. The home features a large owner's suite, 2 baths, living room, dining room, chef's kitchen, breakfast area, laundry room and more.

Floorplans

THE ELAINE

Welcome Home to The Elaine

This classic ranch-style plan has something for everyone.

Available in 3 Bedroom or 4 Bedroom / 3 Bedroom with Study versions, all of the living space is located on one level.

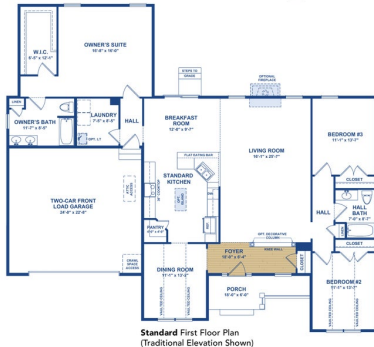
A kitchen made for entertaining opens up to the spacious living area and breakfast nook.

Adding a morning room brings in even more light and adds another dimension. A generously sized Owner's Suite is secluded from the other bedrooms and others a large walk-in closet and private bath.

All dimensions are approximate. Floor plans are artist's conceptions and may vary slightly from actual and most common lot sizes and configurations. Plans and elevations may show options not included in the base price. Details subject to change without notice.

FIRST FLOOR PLAN

■ = Optional Feature



2

THE ELAINE

FIRST FLOOR PLAN WITH POPULAR OPTIONS

■ = Optional Feature

Popular Options Shown:

- Angled Morning Room
- Deck
- Owner's Suite Super Bath
- Gourmet Kitchen
- Powder Room
- Tray Ceiling in Morning Room
- Study
- Corner Fireplace in Living Room

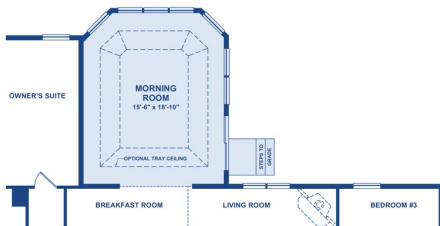


3

THE ELAINE

MORNING ROOM OPTION

■ = Optional Feature

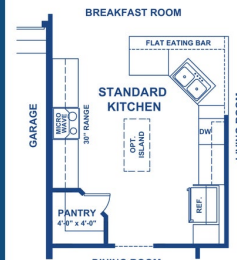


4

THE ELAINE

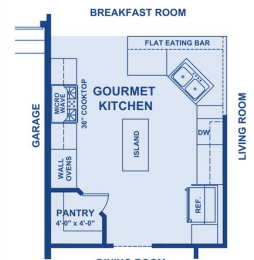
KITCHEN OPTIONS

■ = Optional Feature



Standard Kitchen Floor Plan

The standard Elaine kitchen offers abundant storage and a great layout. An optional island is available for additional room.



Optional Kitchen Floor Plan

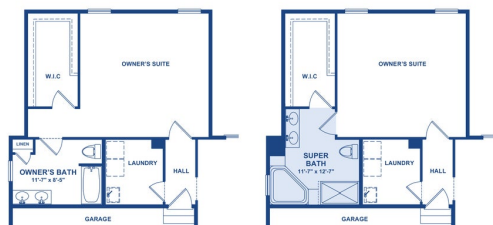
The Optional Gourmet Kitchen layout replaces a slide-in range with a cooktop and two wall ovens. This option also includes an island.

5

THE ELAINE

OWNER'S SUITE OPTIONS

■ = Optional Feature



6