



Powered by [newhomesguide.com](https://www.newhomesguide.com)



Base Price

\$612,900

3 Beds | 2 Baths | 1 Half Bath | 2 Garage

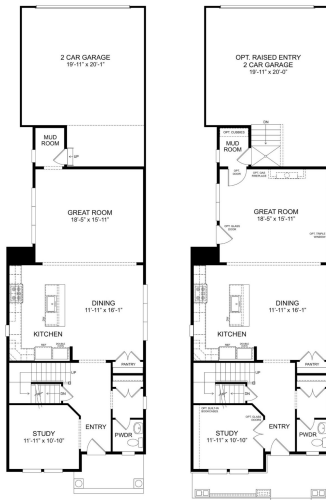
About This Plan

The eye-catching Hartford design is as stunning on the inside as it is on the outside. The open kitchen and family room area is made for creating quality family time and memorable moments each day. Then unwind in your serene owner's suite or soak in your freestanding tub. When you choose the Hartford, you can also personalize the space to fit your family's lifestyle. The upper-level loft is a popular choice if you want to add more stylish, functional living space for all to enjoy.

About This Community

The eye-catching Hartford design is as stunning on the inside as it is on the outside. The open kitchen and family room area is made for creating quality family time and memorable moments each day. Then unwind in your serene owner's suite or soak in your freestanding tub. When you choose the Hartford, you can also personalize the space to fit your family's lifestyle. The upper-level loft is a popular choice if you want to add more stylish, functional living space for all to enjoy.

Floorplans



FIRST FLOOR PLAN

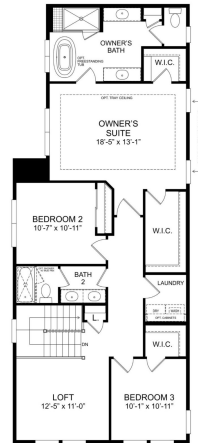
ALTERNATE FIRST FLOOR PLAN
SHOWN WITH ELEVATION 02



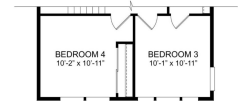
ELEVATION 03



SECOND FLOOR PLAN



ALTERNATE SECOND FLOOR PLAN W/ LOFT
SHOWN WITH ELEVATION 02



ELEVATION 03



LOWER LEVEL PLAN

ALTERNATE LOWER LEVEL PLAN