



Powered by newhomesguide.com



Base Price

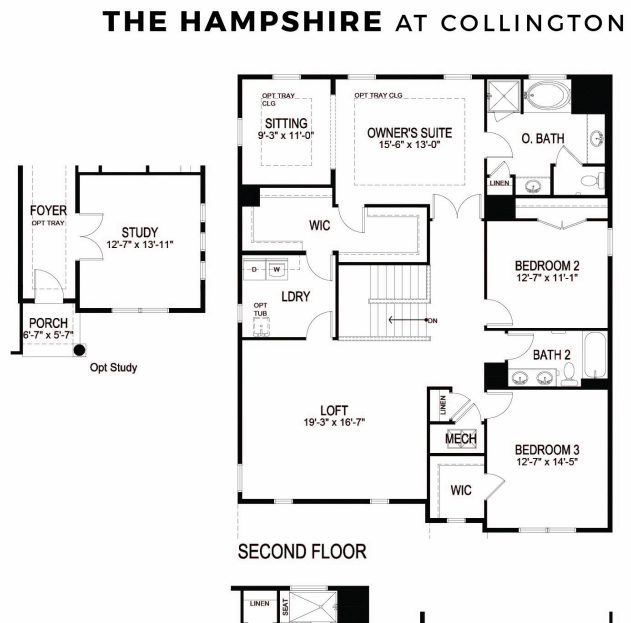
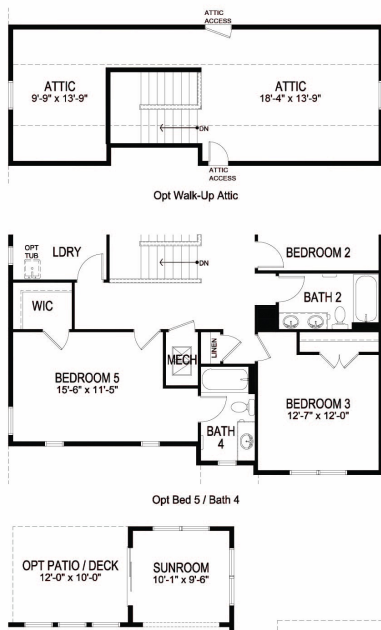
\$395,990

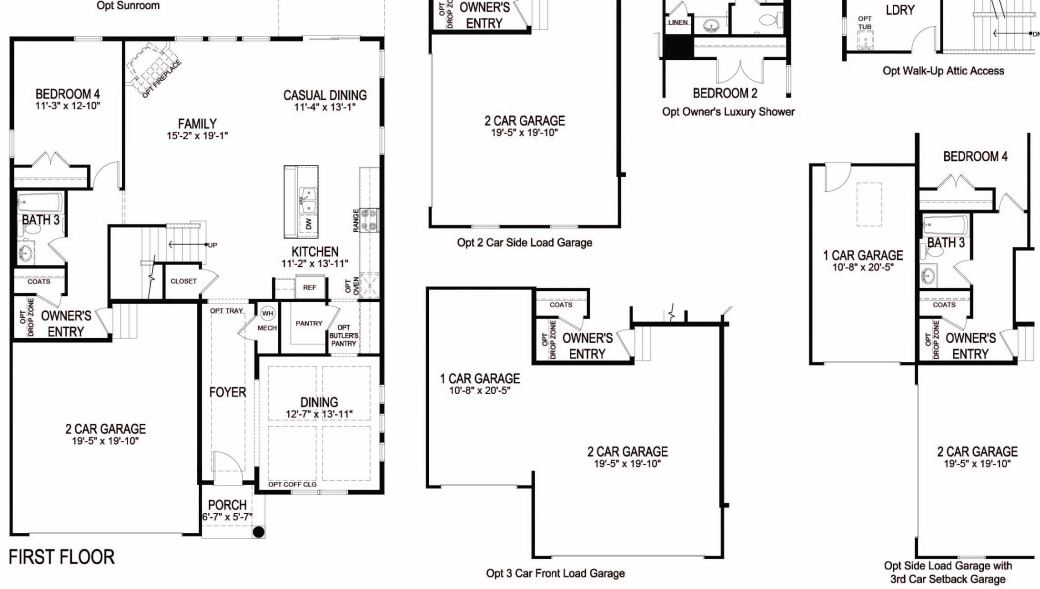
4 Beds | 3 Baths | 2 Garage

About This Plan

The Hampshire is a single-family, new home plan available in Midlothian, This spacious floor plan features 4 bedrooms, 3 bathrooms and up to 5 bed and 4 baths. Stainless steel appliances including gas range, oven, dishwasher and microwave, all in a gourmet eat-in kitchen with granite kitchen countertops and an oversized kitchen island. LED lighting package, Carrier HVAC, Moen faucets, 2-car garage, owner's suite and much more!

Floorplans





*With basement foundations, water heaters and HVAC systems will be relocated from the first or second floors, as specified per plan. All pricing, amenities, included features, availability and delivery dates are subject to change without notice. Elevations will vary. Square footages and measurements are approximate. Pictures, photographs, colors, features, and sizes are for illustration purposes only and will vary from the homes as built. See a Sales Representative for more information.

D.R. HORTON
America's Builder

D.R. HORTON • EXPRESS • EMERALD • FREEDOM

© Copyright 2018 D.R. Horton, Inc.