

Powered by [newhomesguide.com](https://www.newhomesguide.com)



Base Price

**\$455,900**

**2 Beds | 2 Baths | 1 Half Bath | 2 Garage**

## About This Plan

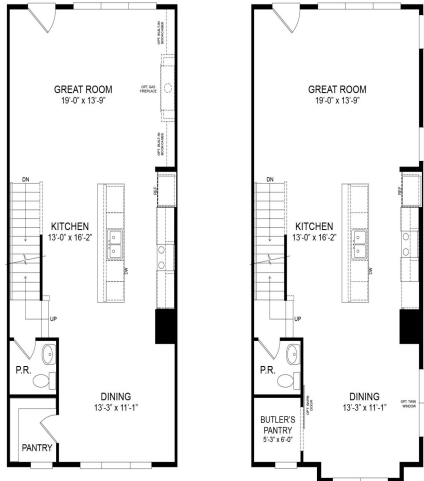
The stunning kitchen complete with a large island and a walk-in pantry is the centerpiece of this classic, yet open design. Upstairs, you'll find three spacious bedrooms or the optional dual owner's suites, plus bathrooms with the highest-quality finishes.

## About This Community

The stunning kitchen complete with a large island and a walk-in pantry is the centerpiece of this classic, yet open design. Upstairs, you'll find three spacious bedrooms or the optional dual owner's suites, plus bathrooms with the highest-quality finishes.

# Floorplans

## FIRST LEVEL FLOORPLAN

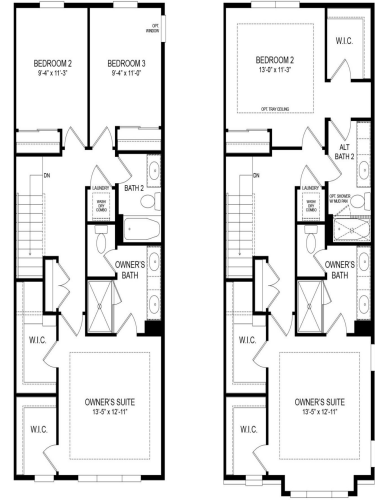


FIRST FLOOR PLAN

OPT. FIRST FLOOR PLAN  
For a detailed list of options,  
please see New Home Advisor

ELEVATION 03

## SECOND LEVEL FLOORPLAN



SECOND FLOOR PLAN

OPT. ALT SECOND FLOOR PLAN  
For a detailed list of options,  
please see New Home Advisor

ELEVATION 02

## LOWER LEVEL FLOORPLAN



LOWER LEVEL PLAN

OPT. LOWER LEVEL PLAN  
For a detailed list of options,  
please see New Home Advisor

OPT. LOWER LEVEL PLAN  
For a detailed list of options,  
please see New Home Advisor