



Powered by [newhomesguide.com](https://www.newhomesguide.com)



Base Price

**\$634,900**

**3 Beds | 2 Baths | 1 Half Bath | 2 Garage**

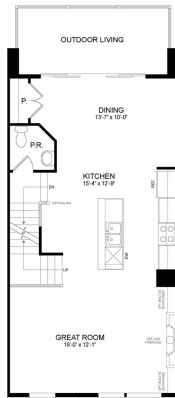
## About This Plan

At North Quarter, you're connected to everything, minutes from Metro, the shops at Pike & Rose and so much more. With the Montrose floor plan, outdoor living comes standard so you can have all of that access without sacrificing your connection to the natural beauty of this Montgomery County community. The central owner's kitchen is perfect for entertaining, and at the end of each day, you can retire to a spacious owner's suite, complete with walk-in closet and expansive owner's bath. When you live here, you'll start each exciting day in complete comfort.

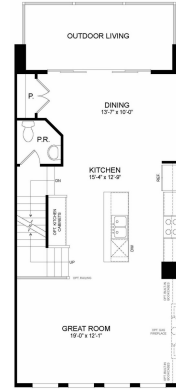
## About This Community

At North Quarter, you're connected to everything, minutes from Metro, the shops at Pike & Rose and so much more. With the Montrose floor plan, outdoor living comes standard so you can have all of that access without sacrificing your connection to the natural beauty of this Montgomery County community. The central owner's kitchen is perfect for entertaining, and at the end of each day, you can retire to a spacious owner's suite, complete with walk-in closet and expansive owner's bath. When you live here, you'll start each exciting day in complete comfort.

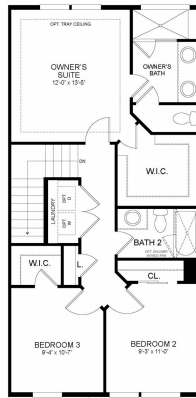
# Floorplans



FIRST FLOOR PLAN  
SHOWN WITH ELEVATION 1 OR 2



FIRST FLOOR PLAN  
SHOWN WITH ELEVATION 3  
AND OPT. KITCHEN CABINETS

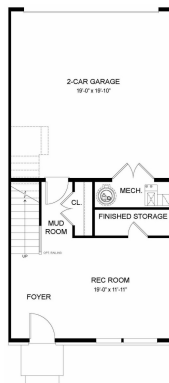


SECOND FLOOR PLAN  
SHOWN WITH ELEVATION 1



SECOND FLOOR PLAN  
SHOWN WITH ELEVATION 3  
AND OPT. STACKED W/D  
AND OPT. UPGRADED OWNER'S BATH

SECOND FLOOR PLAN  
SHOWN WITH ELEVATION 2  
AND OPT. ALTERNATE 2ND FLOOR



LOWER LEVEL PLAN  
SHOWN WITH ELEVATION 3