



Powered by [newhomesguide.com](https://newhomesguide.com)



Base Price

**\$630,900**

**3 Beds | 2 Baths | 1 Half Bath | 2 Garage**

## About This Plan

Create your oasis in the heart of North Bethesda with the Boyd floor plan. A large island serves as the centerpiece of its stunning kitchen. Add an optional deck brings outdoor living space to its light-filled, open-concept main level. The lower level is ready to personalize, with opportunities for a rec room, den, extra bedroom personalized to fit your dream for the space. North Quarter is the catalyst for your new life in a new North Bethesda. Own the lifestyle you crave minutes from the convenience of Metro, the shops and restaurants of Pike & Rose and all your favorite destinations in downtown Rockville and beyond. Flexible floor plans and designer features in every home means that even when surrounded by all this excitement your home is a retreat from it all.

## About This Community

Create your oasis in the heart of North Bethesda with the Boyd floor plan. A large island serves as the centerpiece of its stunning kitchen. Add an optional deck brings outdoor living space to its light-filled, open-concept main level. The lower level is ready to personalize, with opportunities for a rec room, den, extra bedroom personalized to fit your dream for the space. North Quarter is the catalyst for your new life in a new North Bethesda. Own the lifestyle you crave minutes from the convenience of Metro, the shops and restaurants of Pike & Rose and all your favorite destinations in downtown Rockville and beyond. Flexible floor plans and designer features in every home means that even when surrounded by all this excitement your home is a retreat from it all.

# Floorplans



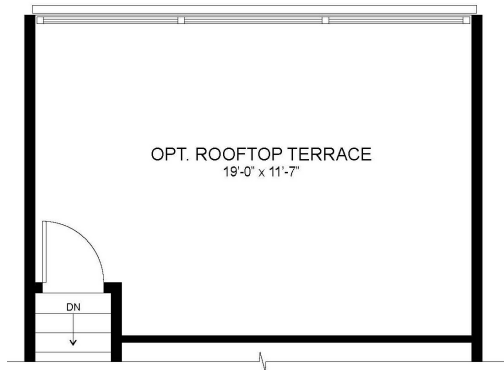
FIRST FLOOR PLAN  
SHOWN WITH ELEVATION 1 OR 2  
AND OPT. CANT. DECK

FIRST FLOOR PLAN  
SHOWN WITH ELEVATION 3

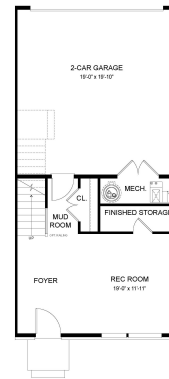


SECOND FLOOR PLAN  
SHOWN WITH ELEVATION 1 OR 2  
AND OPT. ROOF ACCESS STAIR

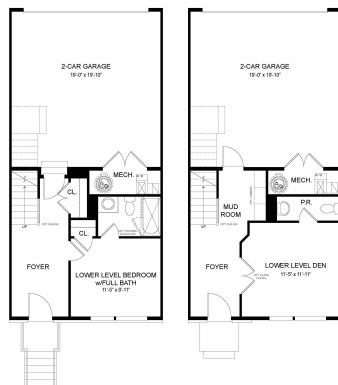
SECOND FLOOR PLAN  
SHOWN WITH ELEVATION 3



OPT. ROOFTOP TERRACE



LOWER LEVEL PLAN  
SHOWN WITH ELEVATION 3



LOWER LEVEL PLAN  
SHOWN WITH ELEVATION 1  
AND OPT. CROPPED GARAGE  
AND OPT. BEDROOM W/ FULL BATH  
AND RAISED STOOP

LOWER LEVEL PLAN  
SHOWN WITH ELEVATION 2  
AND OPT. POWDER ROOM  
AND OPT. DEN  
AND 6' RAISED GARAGE