



Powered by newhomesguide.com



Base Price

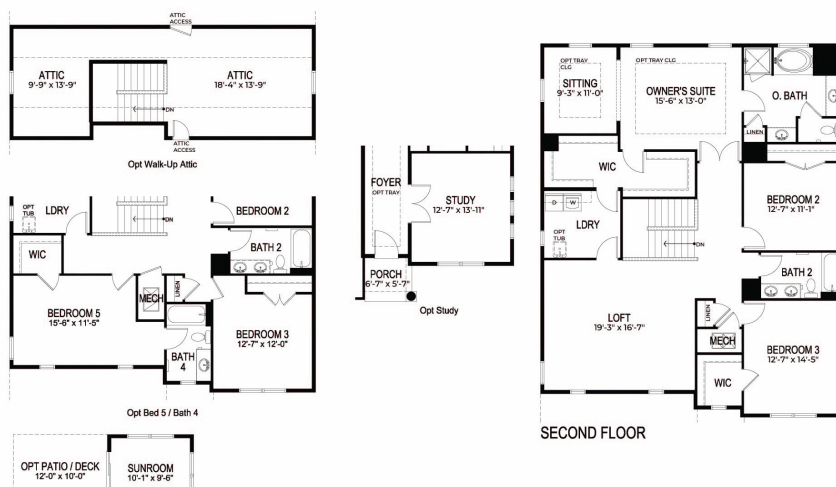
\$424,990

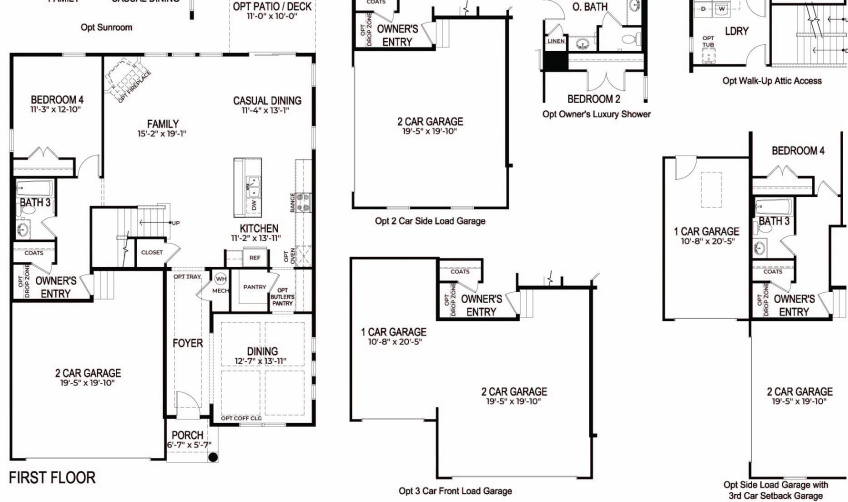
4 Beds | 3 Baths | 2 Garage

About This Plan

The Hampshire is a single-family, new home plan available in D.R. Horton's newest community in Midlothian, Queensbluff. This spacious, 3,230 sq ft floor plan features 4 bedrooms, 3 bathrooms and up to 5 bedrooms and 4 baths. Stainless steel appliances including gas range, oven, dishwasher and microwave, all in a gourmet eat-in kitchen with granite kitchen countertops and an oversized kitchen island. LED lighting package, Carrier HVAC, Moen faucets, 2-car garage, owner's suite and much more!

Floorplans





Two story with 4 Bedroom / 3 Bath / 2-Car Garage

D-401-39/53 - 3230 REV. 062118

D.R. HORTON
America's Builder

D.R. HORTON • EXPRESS • EMERALD • FREEDOM

© Copyright 2018 D.R. Horton, Inc.