



Powered by newhomesguide.com



Base Price

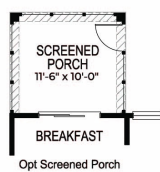
\$399,990

4 Beds | 3 Baths | 2 Garage

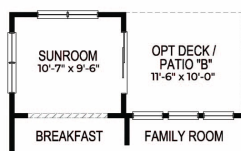
About This Plan

The Faringdon is a single-family, new home plan available in Midlothian, Virginia's newest community, Queensbluff. This spacious Faringdon floor plan features stainless steel appliances including gas range, oven, dishwasher and microwave, all in a gourmet eat-in kitchen with granite kitchen countertops an oversized kitchen island. LED lighting package, Carrier HVAC, Moen faucets, 2-car garage, owner's suite and much more!

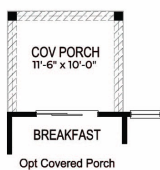
Floorplans



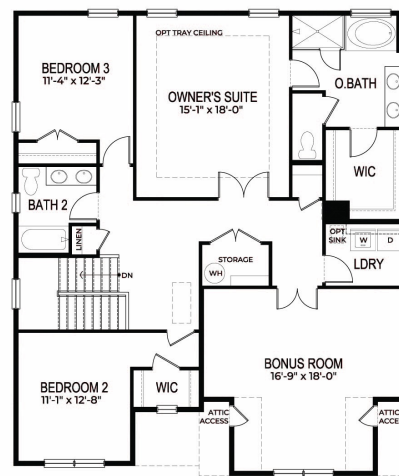
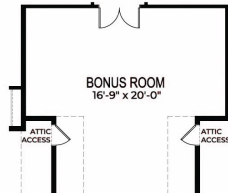
Opt Screened Porch



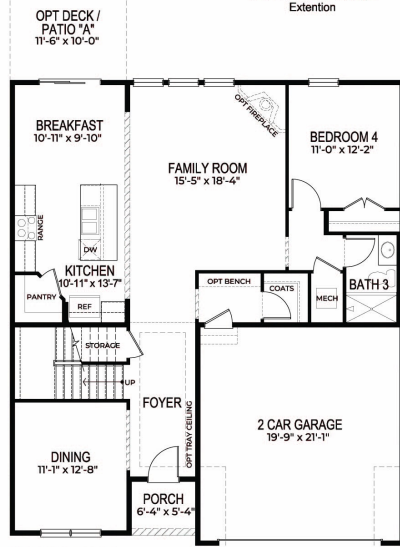
Opt Sunroom



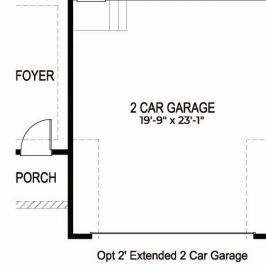
Opt Covered Porch



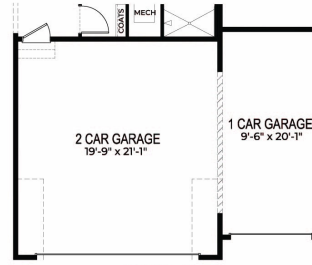
SECOND FLOOR



FIRST FLOOR



Opt 2' Extended 2 Car Garage



Opt 3rd Car Garage

Two story with 4 Bedroom / 3 Bath / 2-Car Garage



D.R. HORTON
America's Builder

D.R. HORTON • EXPRESS • EMERALD • FREEDOM

D-404-39/46 - 2925 REV. 061218

© Copyright 2018 D.R. Horton, Inc.